

Worldwide scope

Erasmus University Rotterdam (EUR) traditionally maintains close ties with universities, faculties and research schools in Europe, North America and the Far East (Indonesia, Japan). Nowadays, the university supports its international ambitions by making considerable investments in its global network, primarily targeting South-East Asia (China, Thailand, Vietnam, Korea).

Delegations of scientists and administrators regularly visit our university for shorter or longer periods of time. The number of foreign students and lecturers arriving grows steadily each year. The atmosphere on campus confirms the university's international allure. Visits to educational fairs all over the world and the increasing numbers of English-language courses and exchange programmes also reinforce EUR's international character. Erasmus University Rotterdam has an excellent reputation throughout the world, and its appeal in foreign countries accordingly increases year by year, attracting students to Bachelor's, Master's and post experience programmes.

International classroom, alumni worldwide

The number of students from abroad coming to the Erasmus University increases every year. In 2006 we counted more than 3,000 from 114 different countries. Once they graduate with a Bachelor's or Master's degree of Erasmus University, they are well-equipped to work in every part of the world, due to our excellent international reputation. This offered an incentive for EUR to organise local chapters abroad, setting up networking events that aim to keep the alumni's involvement with their Alma Mater alive, and to encourage mutual associations between alumni abroad. The Dutch business sector in the relevant regions also maintains a presence at these events.



glance

Erasmii Opera. Erasmus Works

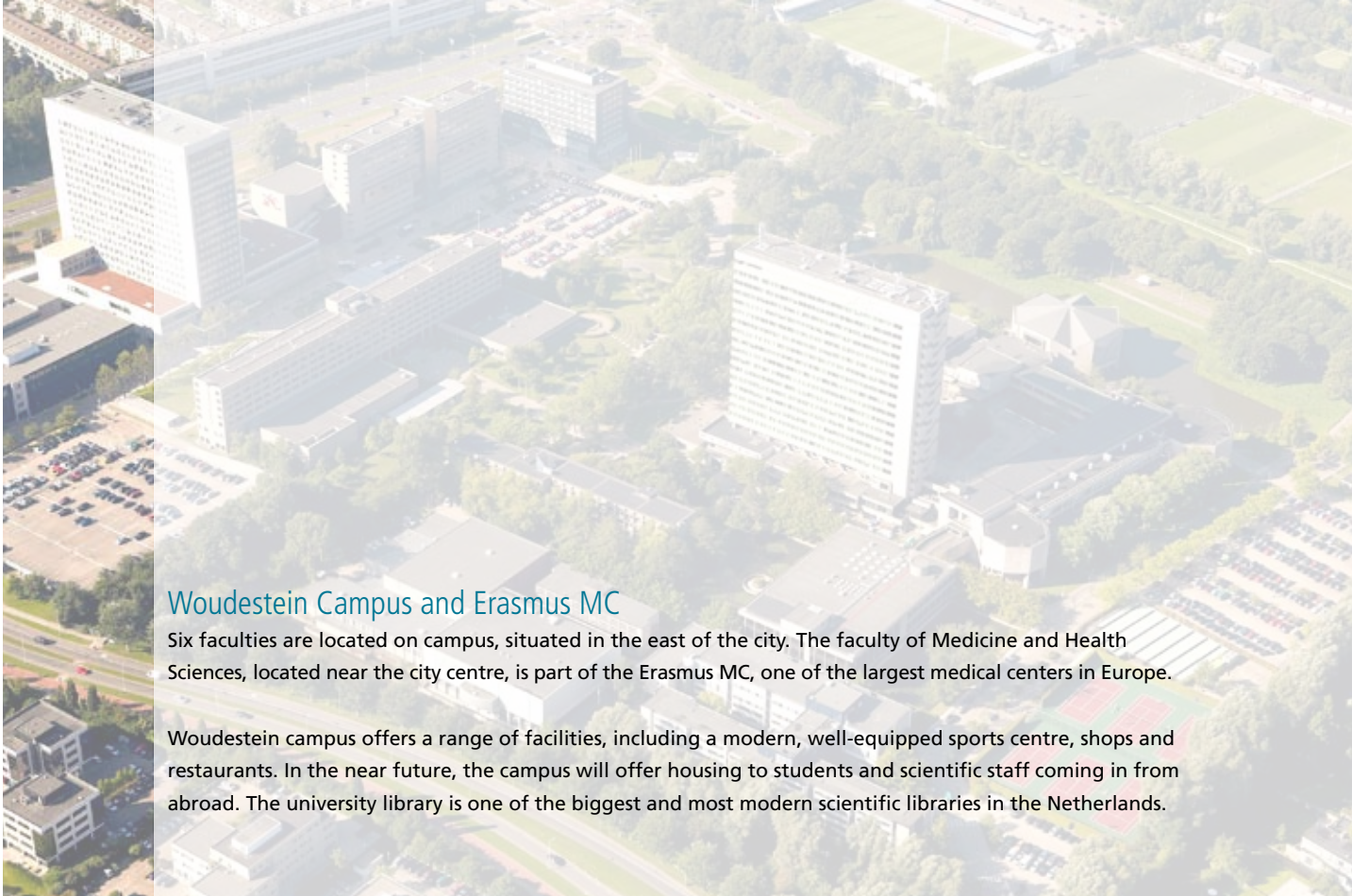
World's most complete collection of original editions of Desiderius Erasmus. 'Praise of Folly' is his most renowned (Collection of Erasmus Center for Early Modern Studies at the Rotterdam City Library).

Nihes Erasmus Summer Programme

Nihes, the Netherlands Institute for Health Sciences, offers various degree programmes and courses in quantitative medicine and health sciences for researchers and professionals, including Research Master's programmes and Summer as well as Winter Courses, attracting hundreds of students from all of the world.

Chinese New Year at campus Woudestein

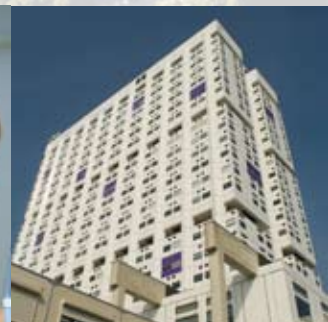
In 2006, Erasmus University Rotterdam signed a partnership agreement with the Fudan University in Shanghai (China) for the ERGO research project - a long-term geriatrics study among 12,000 Rotterdam inhabitants - to be expanded to Shanghai. The study has already led to over 500 publications and 60 doctoral dissertations on correlations between health at a certain age and illness and death later on. Various agreements were also made regarding other fields of study.



Woudestein Campus and Erasmus MC

Six faculties are located on campus, situated in the east of the city. The faculty of Medicine and Health Sciences, located near the city centre, is part of the Erasmus MC, one of the largest medical centers in Europe.

Woudestein campus offers a range of facilities, including a modern, well-equipped sports centre, shops and restaurants. In the near future, the campus will offer housing to students and scientific staff coming in from abroad. The university library is one of the biggest and most modern scientific libraries in the Netherlands.



More information:

Erasmus University Rotterdam
Department of Internal and External Affairs
Burgemeester Oudlaan 50, 3062 PA Rotterdam, The Netherlands

Postal address:

P.O. Box 1738, 3000 DR Rotterdam, The Netherlands
T +31 (0)10 408 1777
E ieb@daz.eur.nl
W www.eur.nl/english

Erasmus MC

The largest university medical center in the Netherlands, with over 10,000 employees.

COLOPHON

Compilation and editing Department of Internal and External Affairs Design Via>Handelskade, Rotterdam Printing Koninklijke Drukkerij Broese & Peerenboom B.V. Photography Imagebank EUR, Levien Willemse, Ronald van den Heerik, Maarten Laupman, Jan van der Ploeg, Hannah Anthonyz, Michelle Muus Translation Overtaal, Utrecht/Ko Hagoort; Circulation 3,500 The statistics in this brochure were derived from the Annual Report 2006 and the EUR Database Academic Affairs Division. July 2007 © Erasmus University Rotterdam



EUR at a glance

The world is our home



A global perspective

Erasmus University Rotterdam (EUR) is an internationally-oriented research university that is closely associated with Rotterdam and the region. Due to the university's close ties to its urban environment, EUR has a claim to the highest international standards of science in a number of specific fields, ranging from medicine and health care to economics and econometrics, as well as management.

Cosmopolitan Rotterdam with its major metropolitan issues is our academic laboratory; there are no limits to how the scientific knowledge developed here can be put into practice.

Our education and research is divided into three areas of expertise:

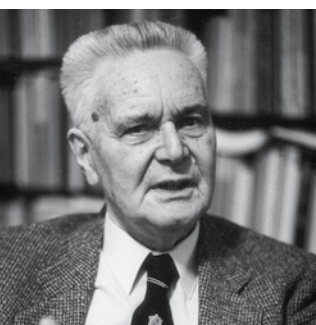
- Economics and Management
- Medicine and Health
- Law, Culture and Society

Rooted in the business community

The history of Erasmus University Rotterdam dates back to 1913, when Rotterdam merchants founded the Netherlands School of Commerce, a university of professional trade education. They regarded the proper education and development of the generations to come as essential to ensure that the port and city would continue to flourish. In the twentieth century, Rotterdam grew to become the largest port in the world.

In 1939, this private school was converted into a national institution receiving government funding: the Netherlands School of Economics (NEH). The NEH gained worldwide renown for its education and research in the fields of economics, business economics and econometrics, including the work of Nobel Prize laureate Jan Tinbergen (1903-1994). The merger of the NEH and the Medical Faculty Rotterdam (1966) resulted in Erasmus University Rotterdam (1973).

The university is named after Desiderius Erasmus (1469-1536), a philosopher, theologian and humanist born in Rotterdam whose books had a major impact on the cultural and intellectual climate in Europe in the tumultuous times between the Middle Ages and the Renaissance. Moreover, Erasmus was a true cosmopolitan, as borne out by his maxim: 'The entire world is my home' (*'Quaevis terra patria'*).



Professor Jan Tinbergen
First Nobel Prize laureate in Economics (1969).



RSM Graduation ceremony
RSM is our leading international business school (7th in the Financial Times meta-ranking 2006), offering a worldwide popular International MSc in Business Administration including 1,500 students from 75 nationalities, as well as post-experience and in-company MBA and MBI programmes.



Founding Fathers Netherlands School of Commerce (1913), Rotterdam bankers and businessmen, Ruys (left), van Stolk and Mees (right).

Rotterdam: academic laboratory

The city of Rotterdam - a modern metropolis featuring the largest port in Europe and home to over 160 nationalities, including 50,000 students, as well as many multinational companies - offers Erasmus University Rotterdam the ideal academic laboratory for developing its scientific knowledge and putting it into practice. The university plays a prominent role in Rotterdam by making substantial contributions in such areas as health care and the economic & socio-cultural development of the city and the region. A few examples to illustrate:

- **Health Studies**

- **Generation Rotterdam (Generation R)**

- In order to gain insight into society and health care issues, 10,000 Rotterdam children are being monitored from foetal life until young adulthood. The study (since 2001 for a period of twenty years) is designed to identify early environmental and genetic causes of normal and abnormal growth and development.

- **The Rotterdam Study (ERGO)**

- This large-scale, multi-disciplinary geriatrics study has been looking at 12,000 people over 55 years old in a Rotterdam residential neighbourhood since 1990. The main objective is to investigate risk factors for chronic disease in the elderly.

- **Transport and Logistics**

The Rotterdam harbour is the number one mainport in Europe from where all destinations in Europe are in easy reach. The Netherlands Research School for Transport, Infrastructure and Logistics (TRAIL) is dedicated to (applied) scientific research in the fields of mobility, transport, logistics, traffic and transport systems. Academic Centre TransPORT is a collaboration of the university, Rotterdam authorities and other regional bodies aimed at developing, embedding and distributing harbour related knowledge.

- **Safety and security**

Safety and security are vital issues for global ports like Mainport Rotterdam. In this field Erasmus University cooperates with Rotterdam World Port Centre.

The Research School Safety and Security in Society (OMV) stimulates and coordinates interdisciplinary research on public safety issue, in collaboration with the Rotterdam Court of Justice and others.

- **Modern Urban Development**

As a modern, internationally oriented, intercultural city Rotterdam is facing a complex mix of issues. Social, policy, law and economic scientists provide recommendations on urban policy making. City marketing is a quite different expertise developed in Erasmus University.

- **Erasmus of Rotterdam**

The Erasmus Center for Early Modern Studies (ECEMS) keeps one of the largest Erasmus collections in the world, which contains important research material from the early modern era. ECEMS is an alliance between the School of Law, the Faculties of History and Arts, Philosophy and Social Sciences, and the Rotterdam City Library.

- **Community Services**

Community Services by students and their student societies.



Professor Steven W.J. Lamberts, rector magnificus EUR (left) and the major of Rotterdam, Mr. Ivo Opstelten.

Cosmopolitan Rotterdam is an academic laboratory, the breeding place for new solutions and applications, with worldwide implications.

Research university

Giving highly-promising researchers the room to manoeuvre - that is what Erasmus University Rotterdam (EUR) sees as its priority. The university deliberately seeks to attract talented scientists at the top of their field. In addition to its one-year Master's programmes EUR has also developed two-year Research Master's in order to stimulate and attract students to become researchers.

A flexible career and employment policy, intensive support for PhD programmes and inclusion of tenure tracks (individual agreements about career development) offer talented staff the opportunity to work toward a flourishing academic career at EUR. In 2006, more than 250 PhD students defended their dissertations before the review committee, and that number grows each year. These excellent conditions for allowing talent to excel have earned EUR the title of research university.

Research Master's

Economics and Management

- Philosophy in Economics
- ERIM Master of Philosophy in Business Research

Medicine and Health

- Clinical Epidemiology
- Clinical Research
- Molecular Medicine
- Neuroscience

Law, Culture and Society

- Justice and Safety & Security
- Philosophy and Economics
- Public Administration and Organisational Science



Professor Casper Hoogenraad
(neuroscience)
Laureate European Young Investigators
Award 2005.

PhD Graduation in Law

Expertise focused on society

Scientific research at EUR is traditionally grounded in a strong focus on society, drawing on the city and its surroundings as sources of inspiration. Research relevant to society is increasingly conducted in multidisciplinary teams, geared to such themes as:

- Economics of Health
- Cognitive Psychology
- Early Modern Studies
- Social Innovation
- Corporate Engagement
- Sustainability
- Transport and Logistics

Due to the social counterpart of the research being conducted, the university has been able to find external financiers and funds for a number of programmes (public-private partnerships). Funding obtained through contract research has always been one of the financial cornerstones of EUR.

Research schools

Approximately 80% of our research activities take place within research schools. EUR acts as secretary for the following research schools:

Economics and Management

- Erasmus Research Institute of Management (ERIM), an inter-faculty research institute
- Tinbergen Institute (TI), an inter-university research institute and graduate school

Medicine and Health

- Cardiovascular Research School of Erasmus University Rotterdam (COEUR)
- Netherlands Institute for Health Sciences (Nihes), an inter-university research institute
- Erasmus Postgraduate School of Molecular Medicine (MM)

Law, Culture and Society

- Research School for Safety and Security in Society (OMV), an inter-university research institute
- Netherlands Institute of Government (NIG), an inter-university research institute

High-quality education

Erasmus University Rotterdam (EUR) offers a wide range of Bachelor's and Master's programmes in both Dutch and English, modern study facilities, extensive student support and an exciting and challenging university city. The education offered at EUR is simultaneously academic and practical, focusing on the transfer and exchange of knowledge at the highest standards, designed to teach students to analyse and solve economic, social, legal and medical problems in society, both now and in the future.

The university continues to invest in maintaining the quality of its education. This involves continuous education for lecturers, periodic assessments in the form of both internal (self-evaluation) and external reviews (national and international accreditations, international peer reviews), as well as satisfaction surveys among the student body.

More and more of the degree programmes bear international certificates of quality. This attracts students and lecturers from all over of the world to Erasmus University Rotterdam. Another strong educational offshoot that elicits considerable enrolments is the 80-some post experience programmes.

The combination of high-quality knowledge and training and its application regularly results in excellent scores in national and international rankings, both for the university and its individual schools.

Honour for talented students

EUR offers an exclusive programme each year to talented Bachelor's students from all fields. The Erasmus Honours Programme gives excellent students the opportunity to encounter fascinating and highly relevant themes in an interdisciplinary way. Prominent professors challenge these students to look beyond the boundaries of their own fields.

Number of students*

RSM Erasmus University	5,948
Erasmus School of Economics	3,979
Erasmus School of Law	3,710
Erasmus MC (Medicine and Health)	2,867
Faculty of Social Sciences	2,202
Faculty of History and Arts	681
Faculty of Philosophy	179
Total EUR	19,566
Students who hold a foreign passport	2,124
Diplomas	4,947

* EUR Database (1st October 2006).

Course participants

Approximately 4,500 people attend courses each year:

- Short-term courses
- Post-experience training courses
- Life long learning/post experience programmes
- Masterclasses
- In-company training sessions



Graduation Ceremony European Master in Law and Economics

The EMLE has been accredited by the NVAO Accreditation Organisation of the Netherlands and Flanders and has Erasmus Mundus status from the European Commission. Besides EUR - one of the programme's founders - the universities of Aix-en-Provence/Marseilles, Bologna, Ghent, Hamburg, Manchester and Vienna also belong to the Erasmus Mundus Consortium.

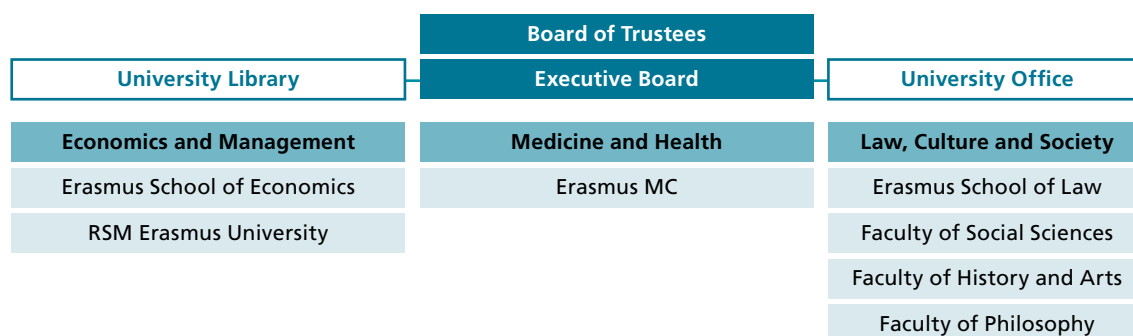


European Commissioner for Competition, Ms. Neelie Kroes, EUR-alumna
EUR-alumni are known among employers for their characteristic Erasmus style: no-nonsense, hard-working, analytical, pragmatic, social and exhibiting excellent communication skills.



Dutch politicians in live TV-debate at national broadcast, co-organized by the Economic Faculty Association Rotterdam (EFR). Location: Aula EUR
EUR students have a reputation for being enterprising in their studies and their extra-curricular activities. Many choose to be on the board of their study association. The experience enhances their 'marketability', and what's more, all those debates, workshops, business weeks, career fairs, company encounters, etc. make the campus a much livelier place to be.

Organisation Chart



Erasmus University Rotterdam (EUR) employs a total of 2,199 people (1,208 men, 991 women). The scientific staff is headed by 191 professors at Woudestein campus, as well as 173 professors in Erasmus MC. The university numbers 31 women among its professors.

Area of expertise	Faculty/School	Bachelor's degree programmes	Master's degree programmes
Economics and Management	Erasmus School of Economics	<ul style="list-style-type: none"> Econometrics & Management Science Economics & Business Economics Economics & Informatics Fiscal Economics International Bachelor of Economics & Business Economics 	<ul style="list-style-type: none"> Econometrics & Management Science Economics & Business Economics & Informatics Fiscal Economics MPhil in Economics (research)
	RSM Erasmus University	<ul style="list-style-type: none"> Business Administration International Business Administration 	<ul style="list-style-type: none"> Business Administration ERIM Master of Philosophy in Business Research (research) General Management International Management - CEMS*
Medicine and Health	Erasmus MC	<ul style="list-style-type: none"> Medicine (not a Bachelor's/ Master's degree programme) 	<ul style="list-style-type: none"> Clinical Epidemiology (research) Clinical Research (research) Molecular Medicine (research) Neuroscience (research)
	Institute of Health Policy and Management	<ul style="list-style-type: none"> Health Sciences, Health Policy and Management 	<ul style="list-style-type: none"> Care Management Health Economics Health Economics, Policy and Law
Law, Culture and Society	Faculty of Social Sciences	<ul style="list-style-type: none"> Psychology Public Administration Sociology 	<ul style="list-style-type: none"> Industrial Ecology (Inter-University Master) International Public Management and Policy Psychology Public Administration Research in Public Administration and Organisational Science (research) Sociology
	Erasmus School of Law	<ul style="list-style-type: none"> Criminology Dutch Law Dutch mr.dr.s.-programme Economics and Law Fiscal Law 	<ul style="list-style-type: none"> Business, Corporate and Maritime Law Commercial Law Criminology Dutch Law European Master in Law and Economics Financial Law Fiscal Law International and European Public Law Justice and Safety & Security (research)
	Faculty of Philosophy	<ul style="list-style-type: none"> Philosophy Philosophy of a Scientific Discipline 	<ul style="list-style-type: none"> Philosophy Philosophy and Economics (research) Philosophy of a Scientific Discipline
	Faculty of History and Arts	<ul style="list-style-type: none"> Cultural Studies History of Society 	<ul style="list-style-type: none"> Art & Culture Studies History of Society Media and Journalism

• = English taught

* CEMS= Community of European Management Schools

See also: www.prospectivestudents.eur.nl