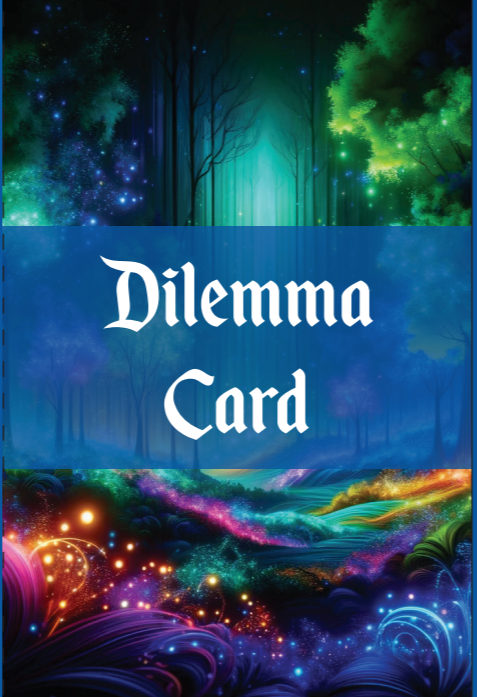


Dilemma Card

Fast Fashion vs. Sustainability

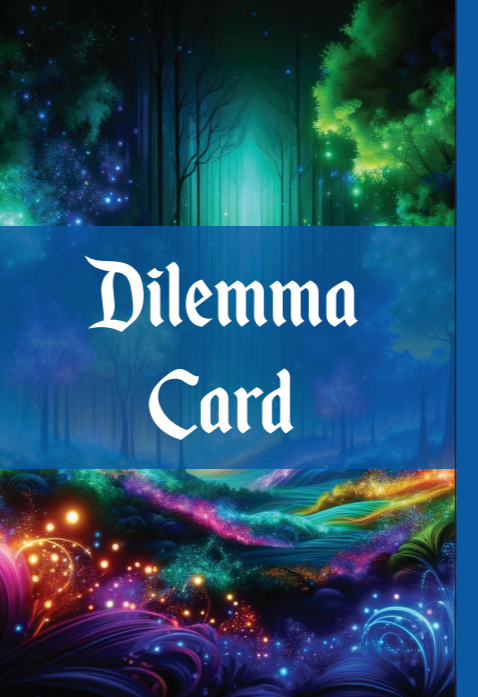
How do we prioritise tackling resource depletion, pollution, and labor exploitation over having accessible and trendy clothing?



Dilemma Card

Convenience vs. Environmental Responsibility

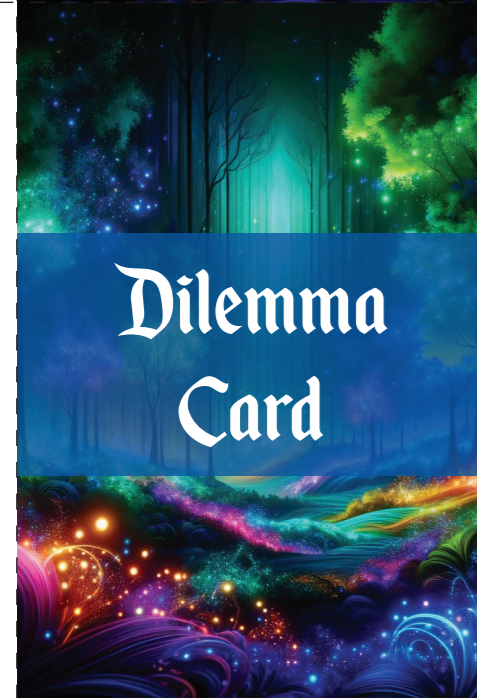
How can we prioritise the health of the earth over the convenience of using plastic, which is easy and everywhere?



Dilemma Card

Urgency vs. Consensus

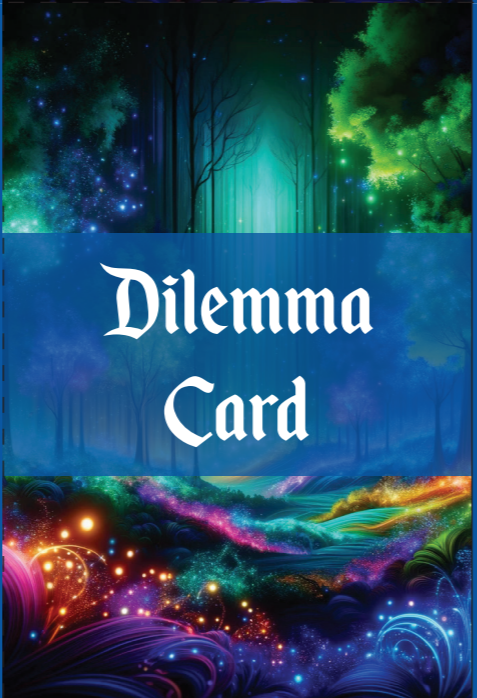
How do we address climate change swiftly when significant changes, like transitioning to cleaner energy, take considerable time?



Dilemma Card

Aid Projects vs. Autonomy

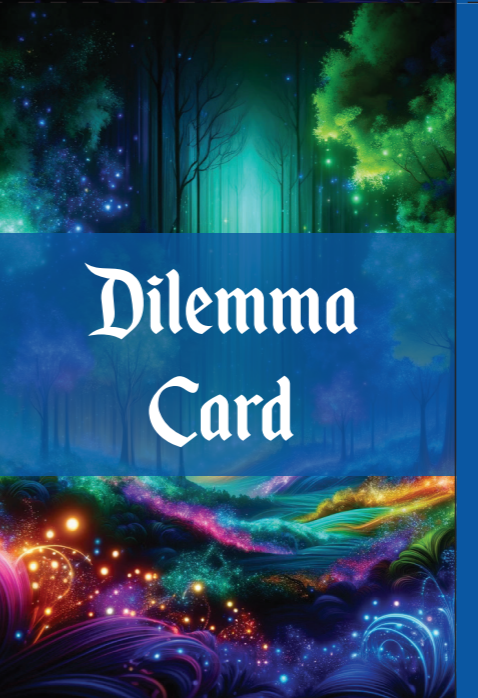
How should international aid projects aimed at underdeveloped areas proceed, knowing they may impose colonial-like power dynamics that undermine local autonomy?



Dilemma Card

Environmental Protection vs. Food Production

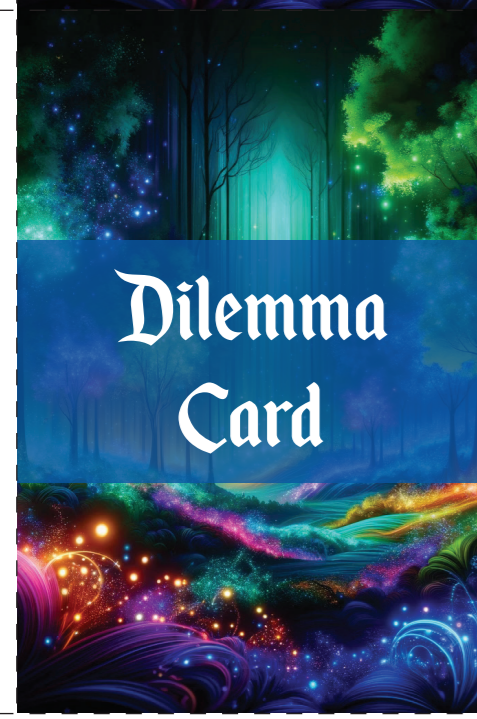
How do we balance combating environmental degradation while keeping our food needs?



Dilemma Card

Social Media Regulation vs. Free Speech

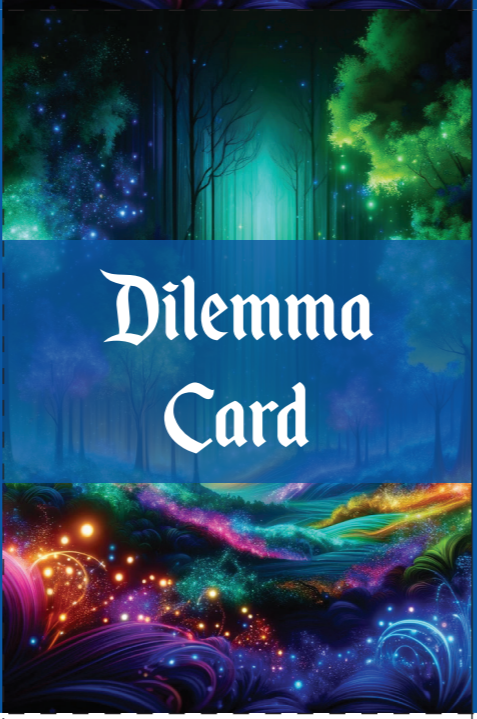
Should we regulate social media to curb misinformation and hate speech, potentially infringing on freedom of expression?



Dilemma Card

Wildlife Conservation vs. Cultural Practices

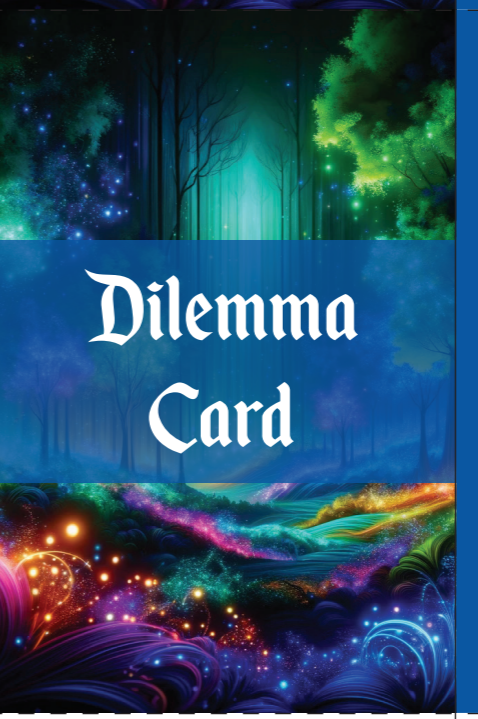
How can we promote wildlife conservation while many people experience an extinction of experience in relation to nature?



Dilemma Card

Packaging Material vs. Costs

How can product designers prioritise environmentally friendly but costlier packaging options while there are cheaper materials that are harmful to the environment?



Dilemma Card

E-Waste Management vs. Technological Advancements

How do we prevent electronic waste amidst rapid technological advancement?





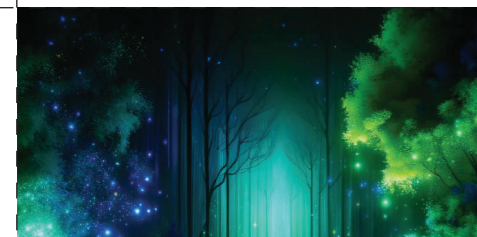
FOLD



FOLD



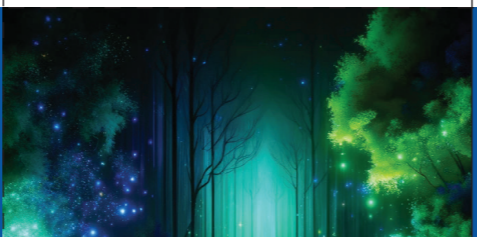
FOLD



Dilemma Card

Eco-Tourism Promotion vs. Environmental Impact

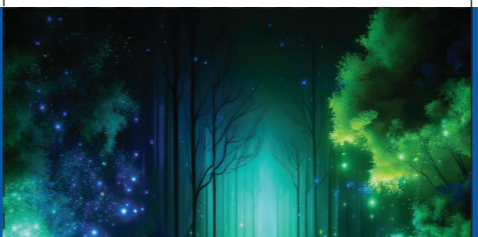
How can we promote eco-tourism for economic benefits and awareness while preventing harm to delicate ecosystems and wildlife habitats?



Dilemma Card

Convenience vs. Sustainability

How do we make sustainable choices while balancing convenience in shopping decisions?



Dilemma Card

Agriculture vs. Conservation

How to meet agricultural demands while preserving natural habitats and ecosystems?



Dilemma Card

Education Access vs. Cultural Preservation

How can modern education systems ensure access to knowledge while preserving indigenous languages and cultural heritage?



Dilemma Card

Gratitude vs. Change

How does one balance being grateful for what they have achieved and acquired with the drive to change the status quo?



Dilemma Card

Community Engagement vs. Personal Development

Should individuals prioritise their own personal growth and development, or actively engage in community-building efforts to foster sustainable and just urban environments?



Dilemma Card

Empathy for Marginalised Communities vs. Privilege Awareness

How can individuals reconcile their desire to empathise with and support marginalised communities while recognising their own privilege and potential biases?



Dilemma Card

Profits vs. Sustainability

How to maintain short-term profitability while integrating long-term sustainability into business practices?



Dilemma Card

Fossil Fuels vs. Renewable Energy

How do we transition to renewable energy sources while addressing the initial higher costs compared to fossil fuels?





FOLD



FOLD



FOLD



Dilemma Card

Activism vs. Self-Preservation

When engaging in activism for sustainable and just cities, how can individuals ensure self-preservation while maintaining their commitment to driving positive change?

Dilemma Card

Innovation vs. Tradition

How can individuals balance the push for innovative solutions to urban challenges while preserving traditional practices and cultural heritage within their city?

Dilemma Card

Refugee Protection vs. National Security

How should countries balance their obligations to protect refugees with national security concerns, especially in contexts where refugee populations are perceived as potential threats?

Dilemma Card

Housing Affordability vs. Gentrification

How can cities address housing affordability challenges without displacing low-income residents due to gentrification and rising property values?

Dilemma Card

Global Awareness vs. Local Action

How can individuals balance their awareness of global sustainability challenges with taking effective action at the local level to contribute to sustainable cities and communities?

Dilemma Card

Ageing Population vs. Healthcare Costs

How can societies ensure adequate healthcare for aging populations without overwhelming healthcare systems and escalating costs?

Dilemma Card

Empowerment vs. Dependency

When working towards equity, how can individuals empower marginalised communities without fostering dependency or perpetuating unequal power dynamics?

Dilemma Card

Collaboration vs. Competition

How can individuals balance the competitive aspects of achieving personal success with the collaborative efforts needed to address complex global challenges?

Dilemma Card

Education Standardisation vs. Personalised Learning

How can education systems strike a balance between standardised curriculum and assessments versus personalised learning approaches tailored to individual student needs and interests?



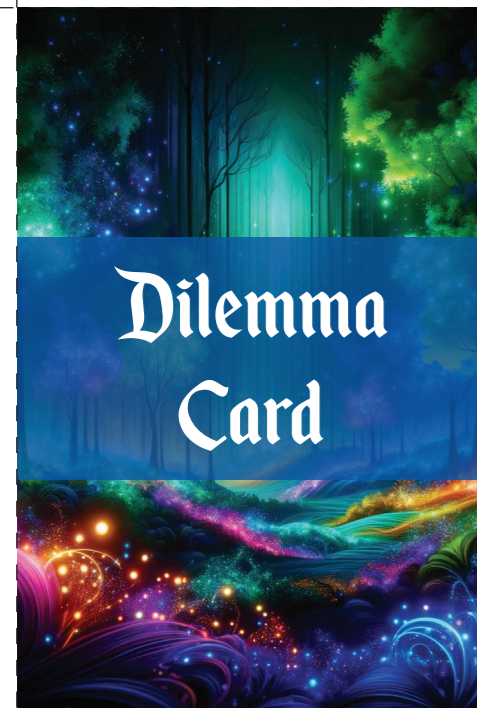
FOLD



FOLD



FOLD



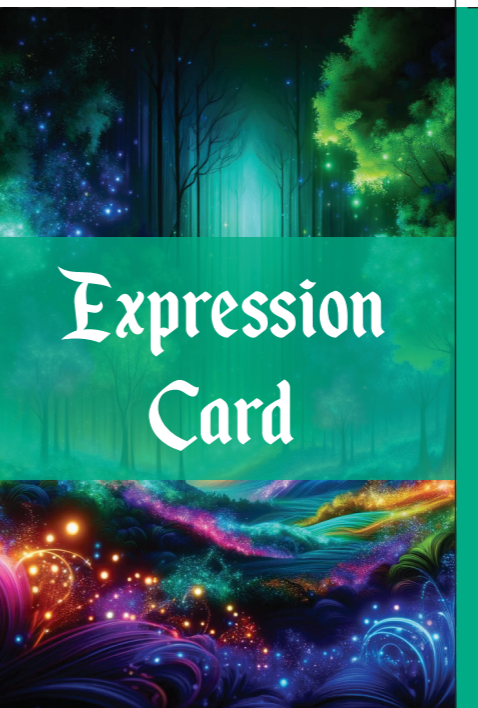
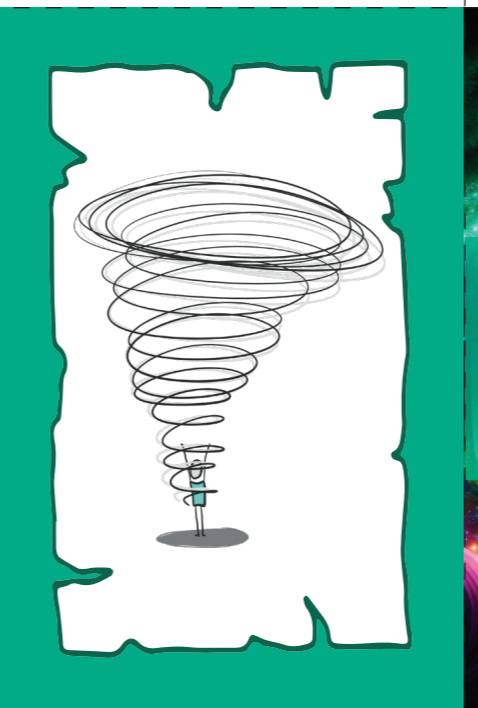
Dilemma Card

Mindfulness vs. Information Overload

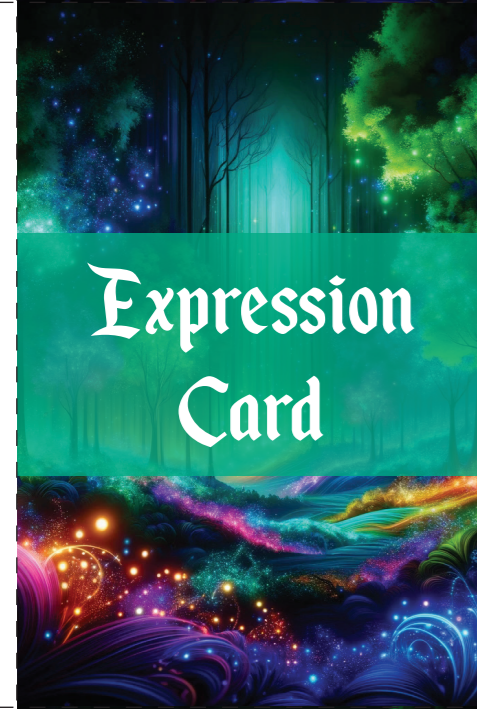
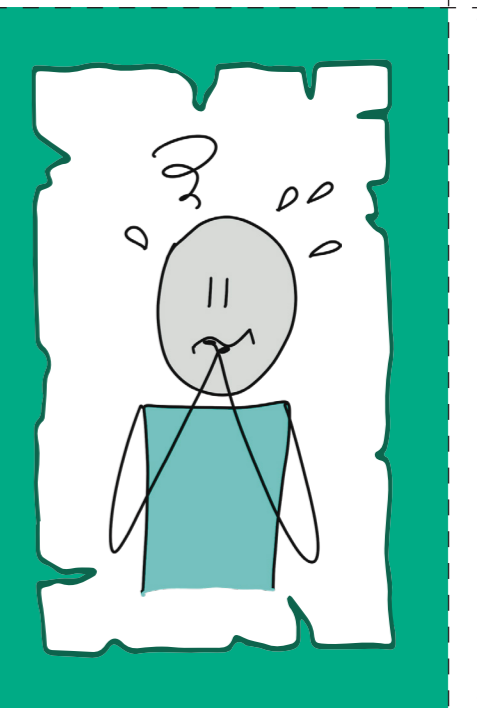
In an age of constant connectivity and information overload, how can individuals cultivate mindfulness and inner peace while staying informed and engaged in sustainability efforts?



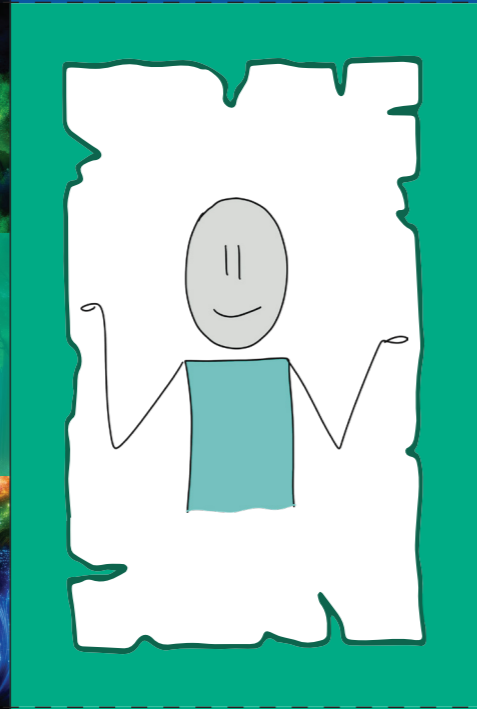
Expression Card



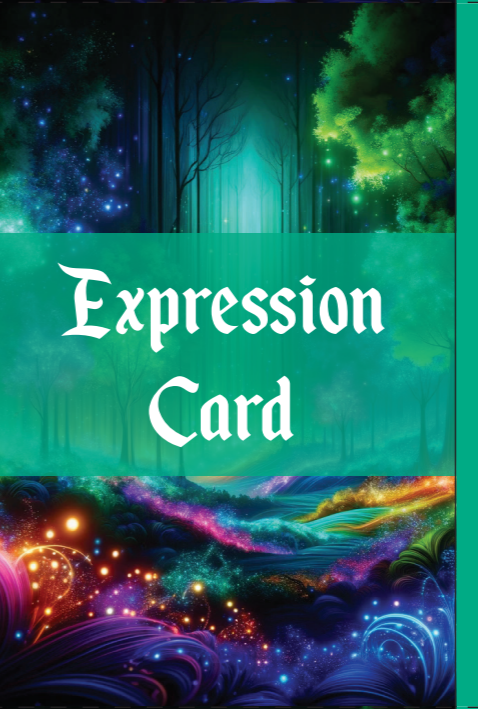
Expression Card



Expression Card



Expression Card



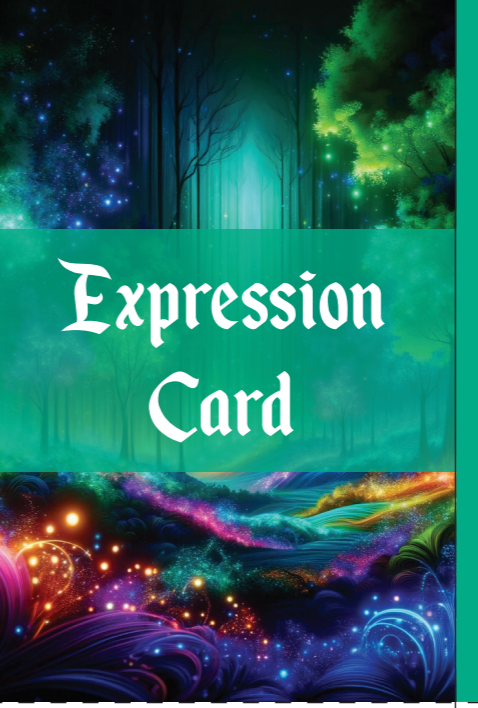
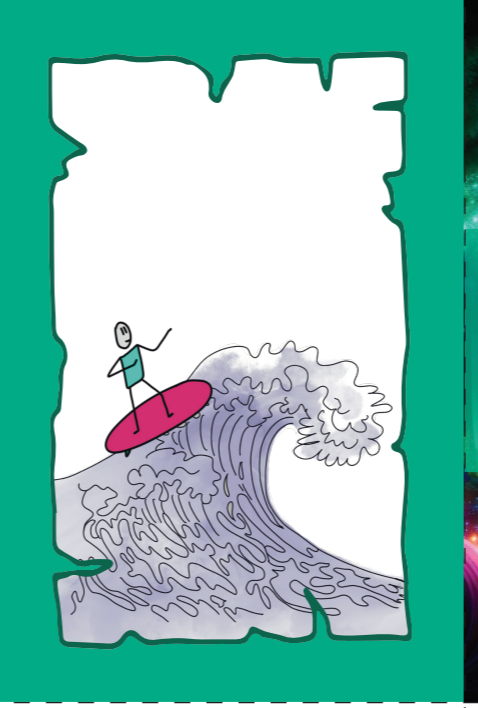
Expression Card



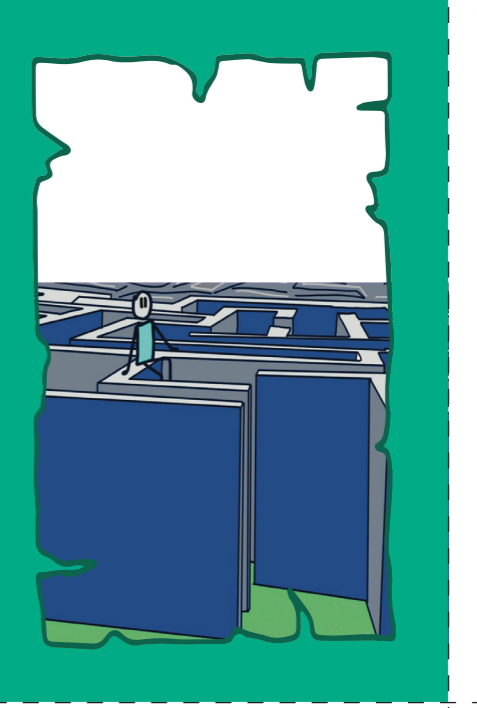
Expression Card



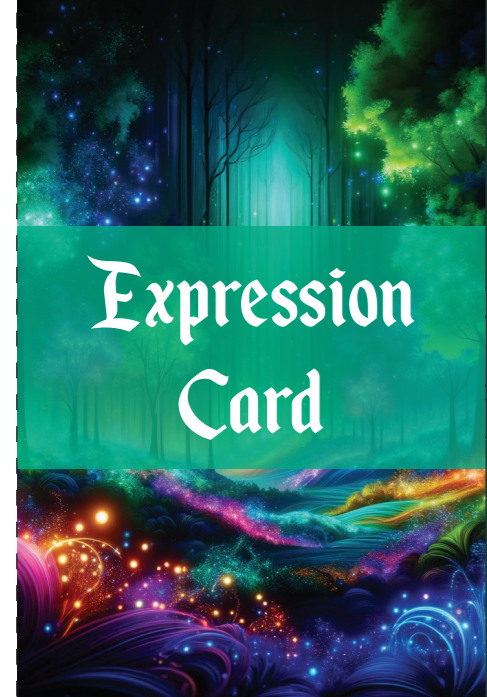
Expression Card



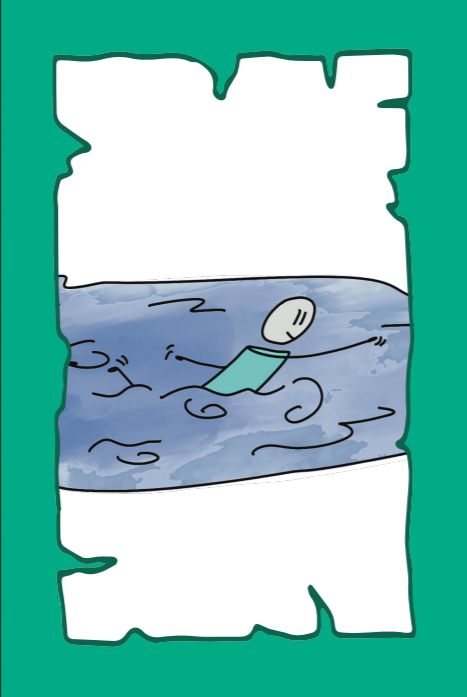
Expression Card



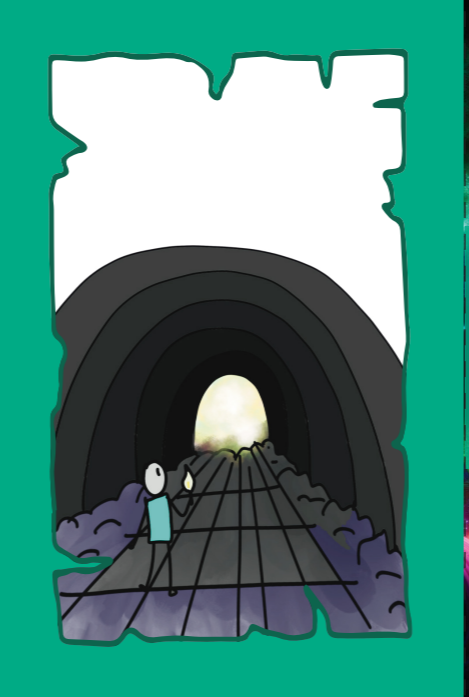
✂ FOLD ✂ FOLD ✂ FOLD ✂



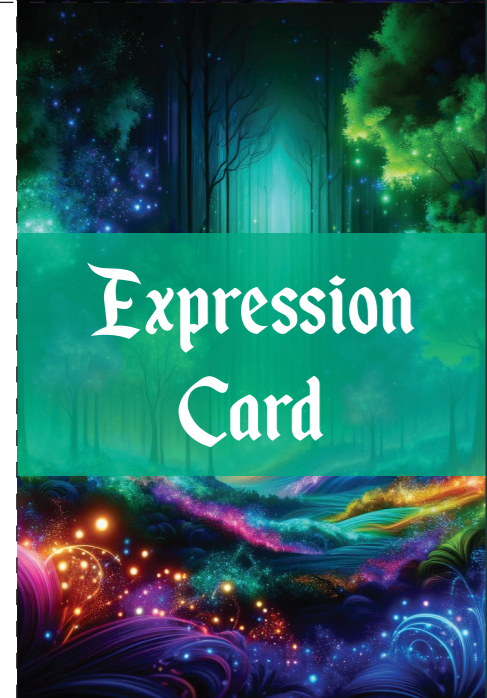
Expression Card



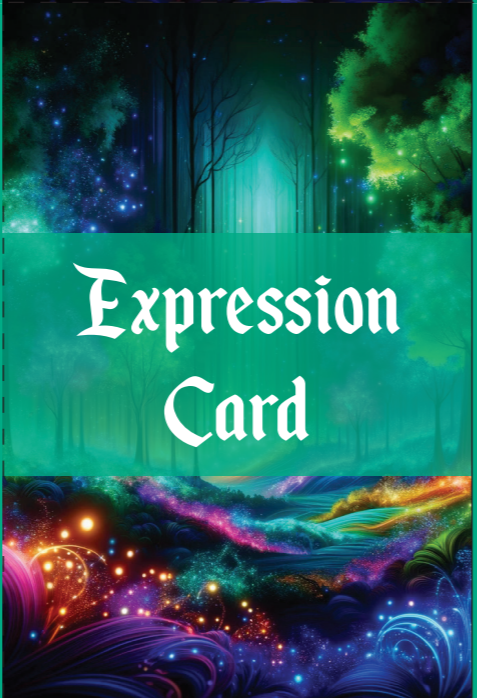
Expression Card



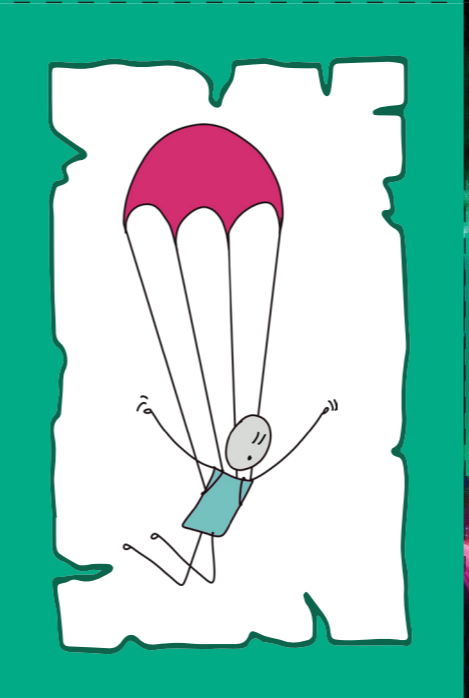
Expression Card



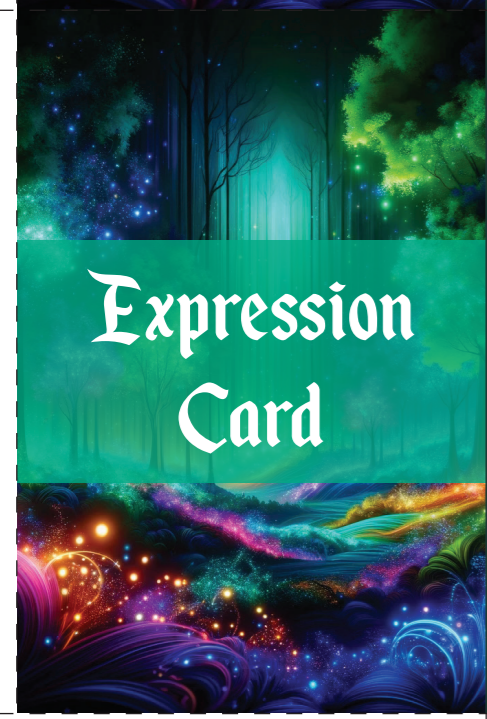
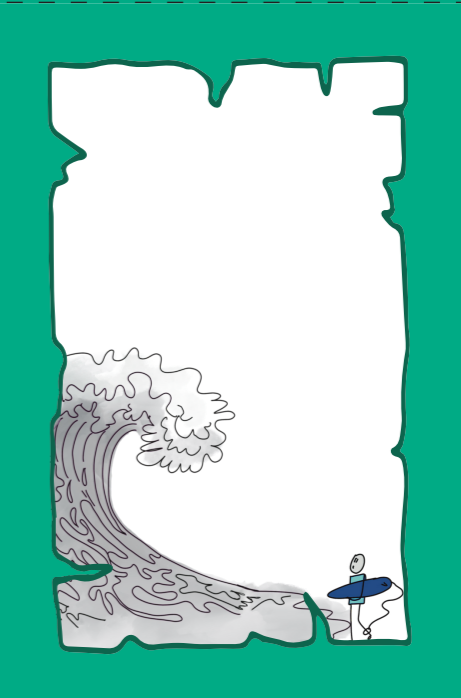
Expression Card



Expression Card



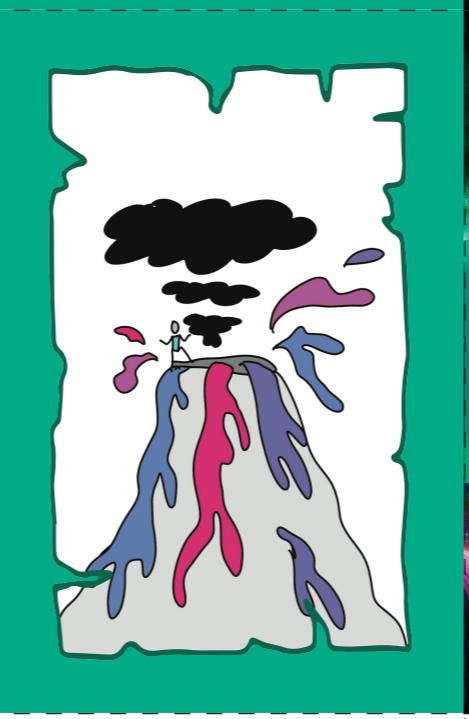
Expression Card



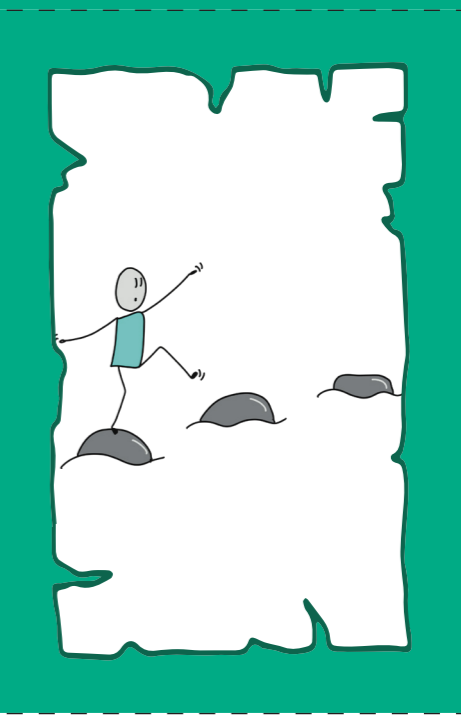
Expression Card



Expression Card

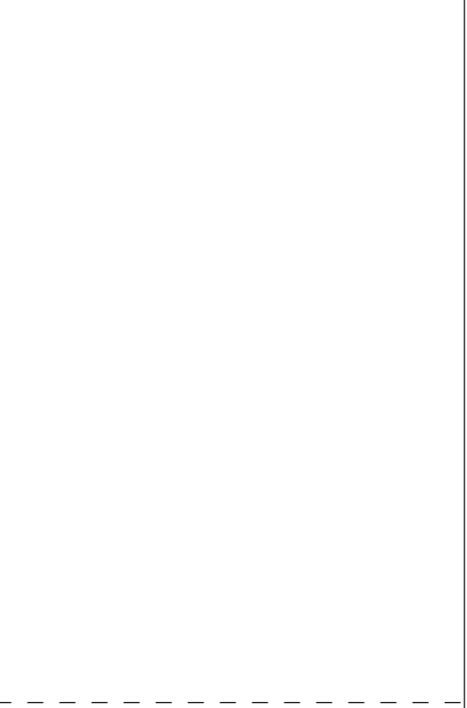
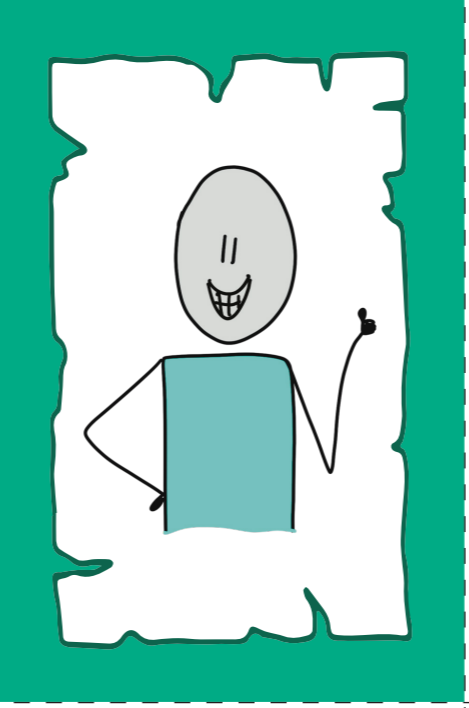
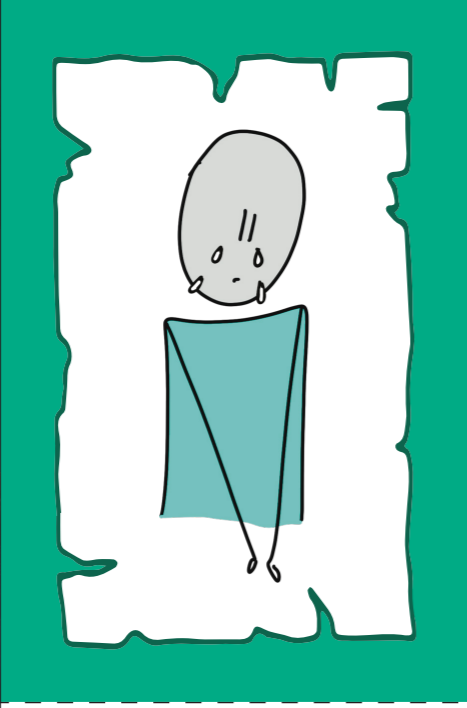
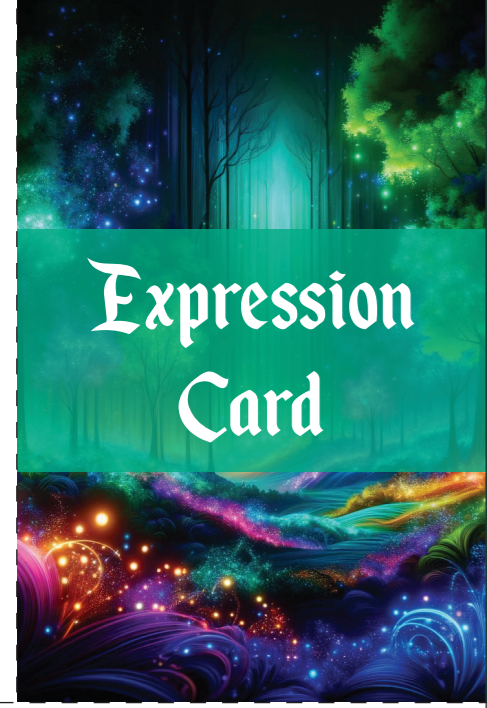
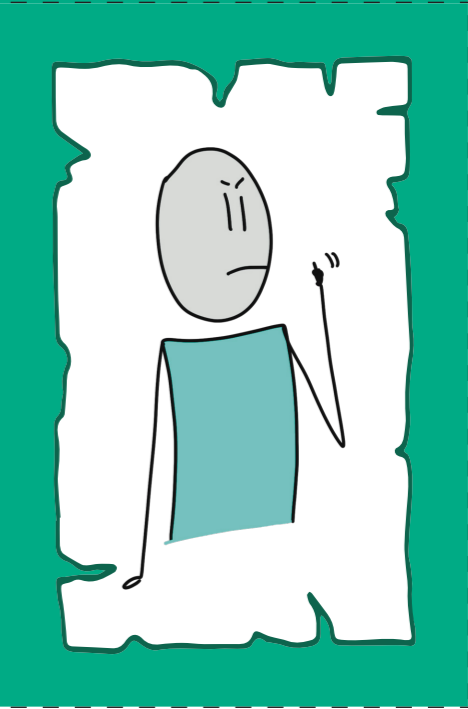
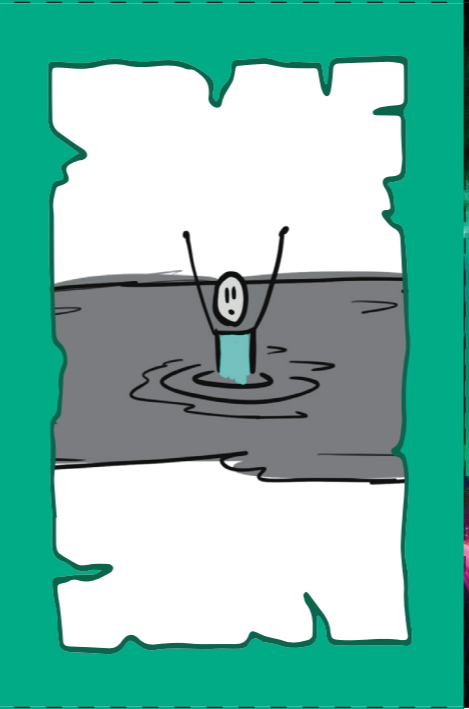
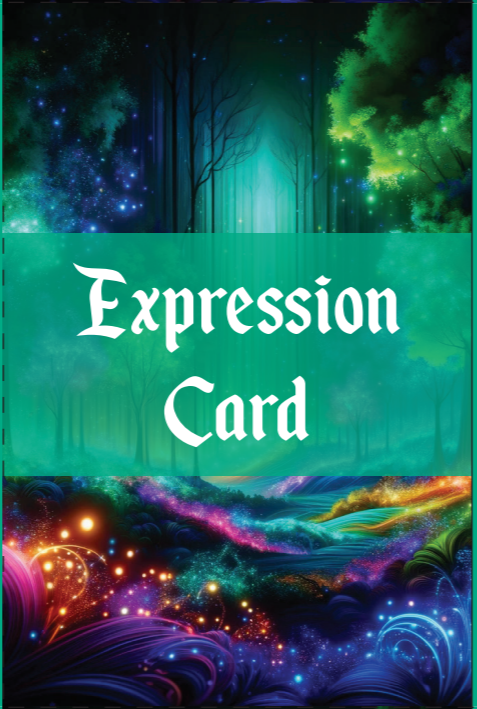
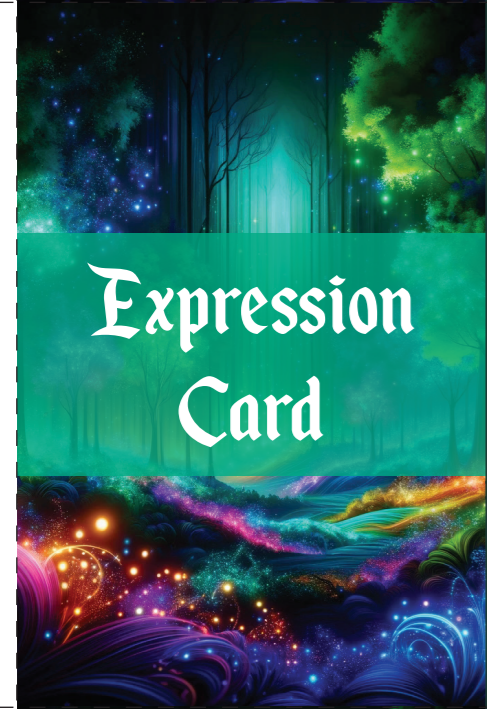
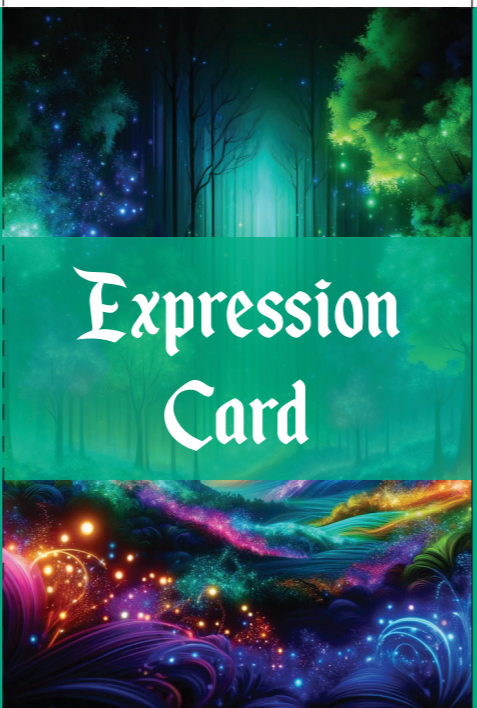
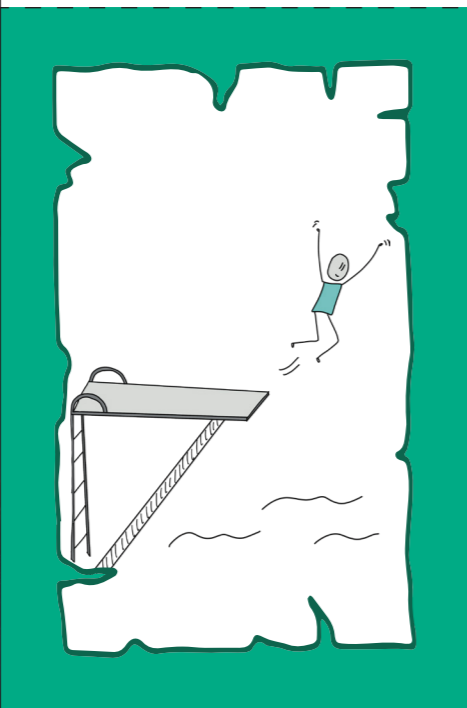
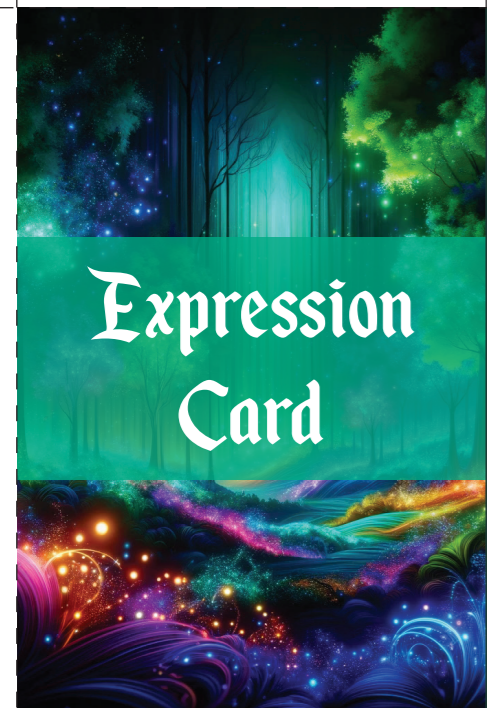


Expression Card



✂ ✂ ✂ ✂ ✂ ✂ ✂ ✂

FOLD FOLD FOLD



Scissors icons indicating cut lines on the right side of the page.



What would you regret if we would all move to a new planet?



What does empathy mean to you in this situation?



What support do you need?



What is your intention?



If you could live in any fictional world from a book or movie, where would you choose to live and why?



What is the worst advice in this situation?



What unexpected effect could the situation have?



If you could interview any historical figure and ask them anything, who would it be and what would you ask?

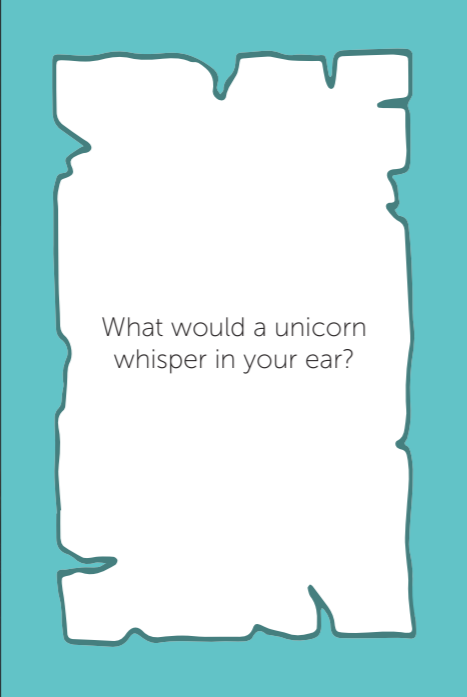


How would a child approach this?





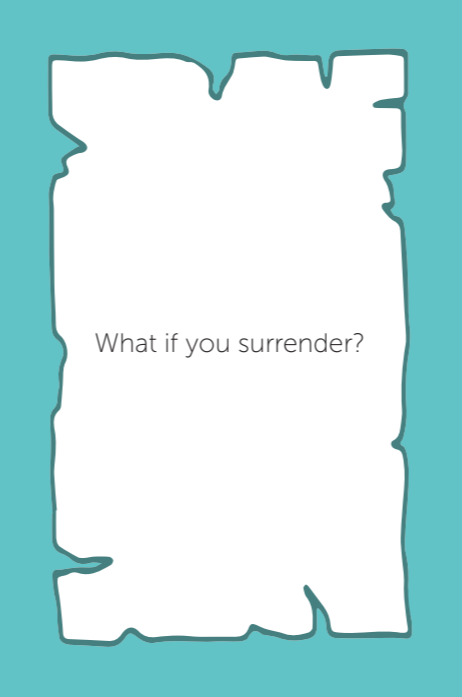
Question Card



What would a unicorn whisper in your ear?



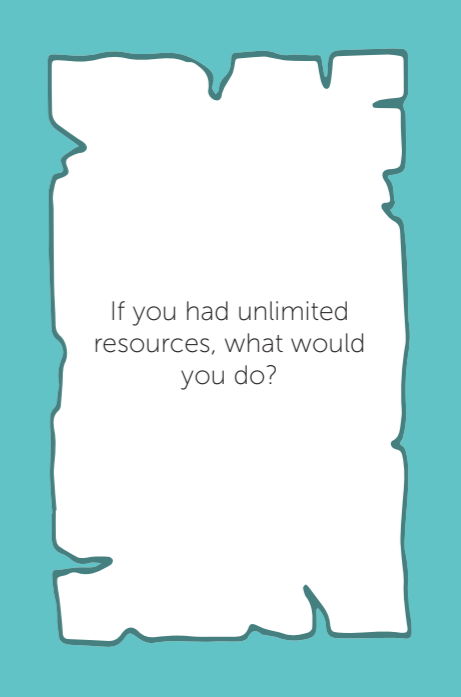
Question Card



What if you surrender?



Question Card



If you had unlimited resources, what would you do?



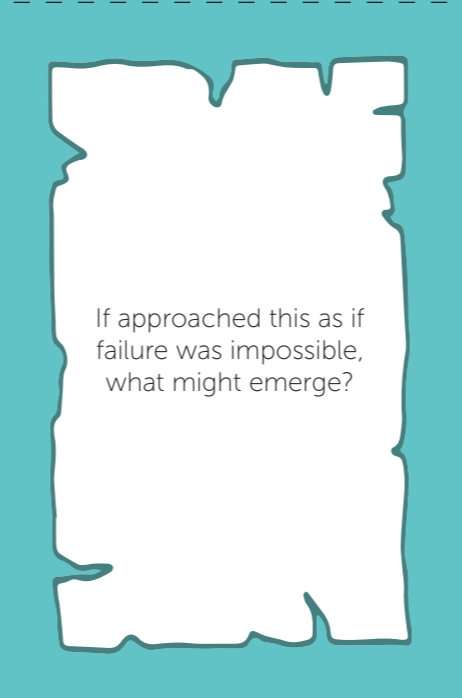
Question Card



What support do you need?



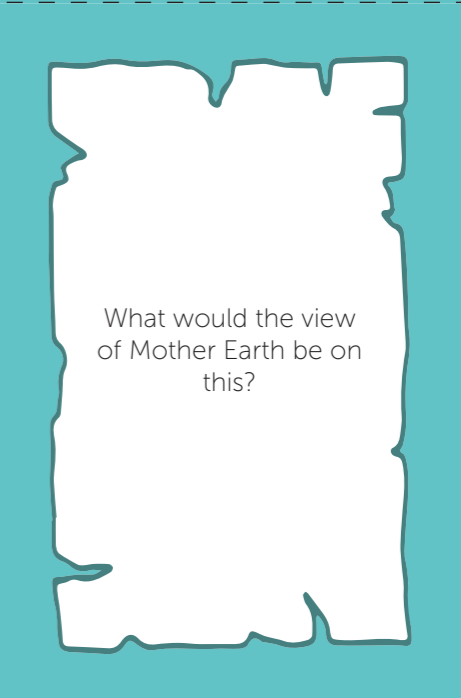
Question Card



If approached this as if failure was impossible, what might emerge?



Question Card



What would the view of Mother Earth be on this?



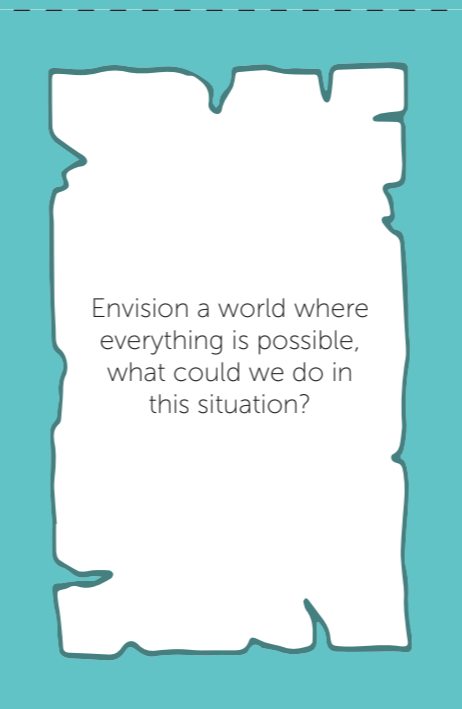
Question Card



What advice would a tribal elder give you?



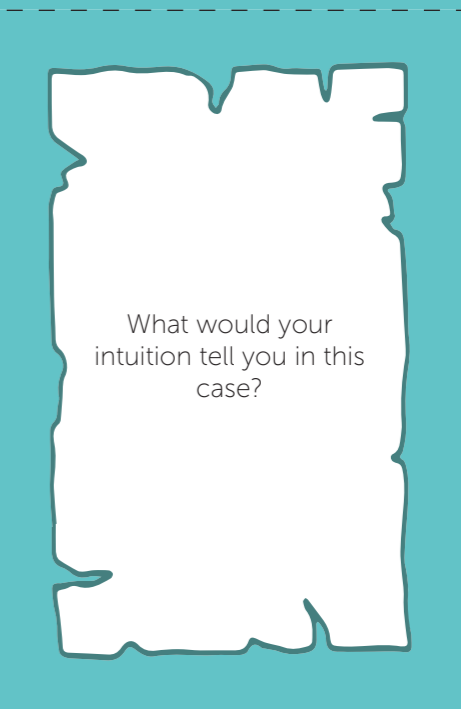
Question Card



Envision a world where everything is possible, what could we do in this situation?



Question Card



What would your intuition tell you in this case?





What would the power of the collective mean in this situation?



How might a futuristic society perceive this current situation?



What does your inner child tell you about this?



If you could choose a different path, what would that entail?



If we could give our grand grand children a voice, what would they prioritise in this situation?



What would you do to remain engaged in this situation?



What would your 70-year old self tell you?



How would someone from the Middle Ages look at this?



What would Dumbledore say?





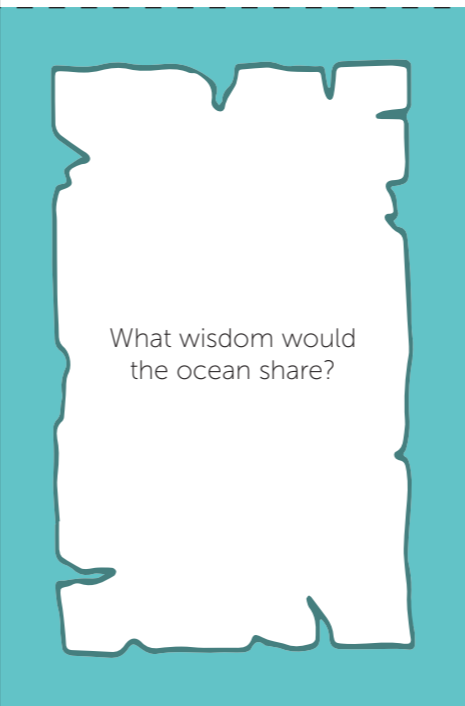
Question Card



What if you were a squirrel?



Question Card



What wisdom would the ocean share?



Question Card



What if you were not alone?



Question Card



What are you grateful for?



Question Card



What kind of story are you telling about yourself?



Question Card



What are you enthusiastic about?



Question Card



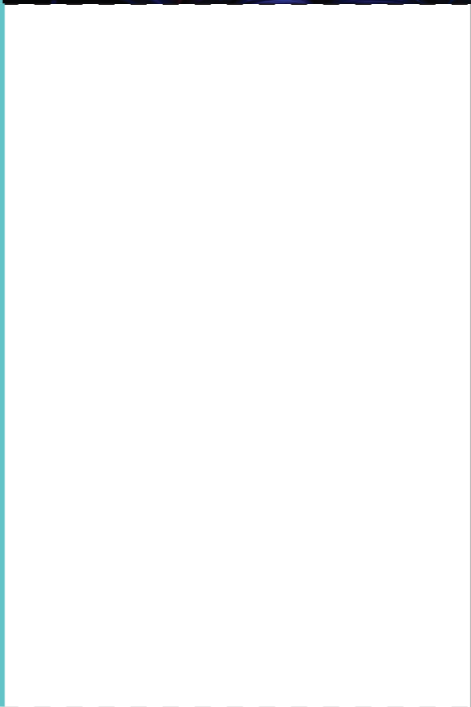
What do you not want to let go of?



Question Card



What would the ideal world look like?



Power Animal Card



Moon Rabbit



"Embody the spirit of the Moon Rabbit," hopped the gentle creature from East Asian folklore. "Hop through life with gentle determination. Radiate kindness like moonlight wherever you go."

Power Animal Card



Kitsune



"Follow the cunning spirit of a Kitsune," whispered the shape-shifting fox from Japanese mythology. "Navigate life's twists with cleverness and adaptability. Make every journey a captivating tale of enchantment."

Power Animal Card

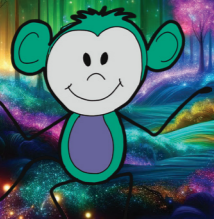


Drop Bear

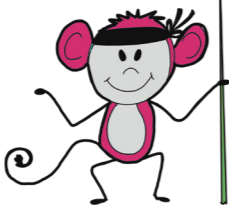


"Embrace the Drop Bear's stealthy vibe," playfully exclaimed the Australian legend. "Navigate life's branches with curiosity and caution. Drop surprises of joy when least expected."

Power Animal Card



Vanara



"Inspire qualities akin to Vanara," spoke the monkey-like creature from Hindu epics. "Harness boundless strength and let your actions be driven by selfless devotion and service to a higher purpose."

Power Animal Card



The Rat King

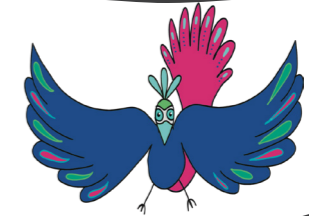


"Yet, remember humility," advised the Rat from Chinese mythology, its presence a testament to resilience. "For true strength lies not in pride but in knowing one's own worth. In the tapestry of life, every thread—no matter how small—is woven with purpose."

Power Animal Card



Phoenix

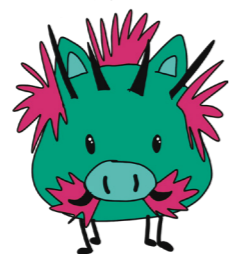


"Hey there, hot stuff! Remember, life's a bit like my feathers – it might burn sometimes, but it's all just a prelude to a fabulous rise. So, flap those wings and show the world your legendary sense of humor while you're at it, echoing the timeless wisdom of ancient Egypt where the myth of rebirth and renewal, embodied by the phoenix."

Power Animal Card



Gullinbursti

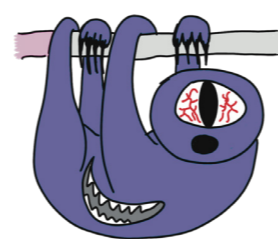


"Channel your inner Gullinbursti," grunted the golden-bristled boar from Nordic mythology. "Be the friend with a heart of gold. Keep your loyalty and forge solid companionships wherever you go."

Power Animal Card



Maniguari



"Follow the Maniguari's path," whispered the mysterious shadowy being from Venezuelan folklore. "Dance through the shadows with grace. Embrace the mystery of the night, and let your intuition guide you to unseen wonders."

Power Animal Card



Dragon



"Embrace the spirit of the Dragon, born from the ancient myths and legends of diverse cultures around the world, where dragons originated as symbols of power and wisdom. Embrace the flames boldly, for they hold the power to illuminate your path."



FOLD



FOLD



FOLD



Power Animal Card



Asena



"Echoing the spirit of Asena, celebrate the enduring legacy of Turkish folklore, emphasizing the importance of inner strength, instinctive wisdom, and the power of community. Just as the wolf embodies resilience and adaptability, so too can we overcome challenges with determination and unity."

Power Animal Card



Camazotz



"Take a leap from Camazotz," whispered the bat-like creature from the Mayan lands. "Navigate the night with your sharp senses. Embrace the shadows as opportunities, and soar through challenges with unmatched resilience."

Power Animal Card



Centicore



"Embrace the whimsy of a Centicore," chimed the magical creature of medieval European. "Balance life's diverse elements with grace. Let your uniqueness shine, making every stride a magical dance."



Firefly Card

1

"Navigate life's labyrinth with the guidance of a wise wizard's wand, because let's face it, without magic, we're just stumbling around at times."

Red

Firefly Card

1

"Embrace your inner compass, unless it's pointing towards a nice break with a hot drink - then, follow it with unwavering determination!"

Blue

Firefly Card

1

"Stay true to yourself, unless 'yourself' wants to sit still in the rain without an umbrella, then consider dancing instead."

Yellow

Firefly Card

2

"Understand complexity like a confused chameleon in a bag of colourful candy - constantly changing colours but never quite blending in with the crowd."

Red

Firefly Card

2

"Wrap your mind around complexity like a cat trying to fit into a box that's two sizes too small - it's a tight squeeze, but the purrs of enlightenment make it worth it."

Blue

Firefly Card

2

"Structure the unknown like a toddler building a skyscraper out of Lego - sure, it may collapse, but the process is half the fun!"

Yellow

Firefly Card

3

"Embrace the unknown with open wings and curious eyes, for in the realm of possibilities, even the night sky holds stars yet to be discovered!"

Red

Firefly Card

3

"Visualise the future like a fortune-teller with a broken crystal ball - sure, the visions are hazy, but that just adds to the mystique!"

Blue

Firefly Card

3

"Appreciate the little things in life like a squirrel hoarding acorns - sure, it may seem nuts, but it's a surefire way to find joy in the chaos!"

Yellow

Firefly Card

4

"Relate to others like a panda eating bamboo - slow, methodical, and occasionally falling asleep mid-bite, but always with a good vibe!"

Red

Firefly Card

4

"Embrace your connectedness with others like a knot in a tangled ball of yarn - it may seem chaotic, but there's beauty in the interwoven threads of existence!"

Blue

Firefly Card

4

"Walk your path like a penguin on a tightrope - sure, it's a balancing act, but the occasional hesitancy just adds to the charm!"

Yellow

Firefly Card

5

Embrace humility like a hedgehog with a tiara - sure, it may seem unconventional, but there's space for trying something new!"

Red

Firefly Card

5

"Master communication like a penguin trying to explain flight to a fish - it may seem ridiculous, but underwater they will find their speed."

Blue

Firefly Card

5

"Build collaborative relationships like a beaver constructing a dam - sure, it may cause a flood of emotions, but the teamwork is dam-impressive!"

Yellow



FOLD




FOLD



FOLD



Firefly Card



6

"Co-create with diverse stakeholders like a chef trying to please a table of picky eaters - sure, it's a recipe for disaster, but the culinary adventure is worth it!"

Red

Firefly Card



6

"Embrace diversity like a unicorn at a rainbow convention - sure, it may seem redundant, but there's always room for more color in the world!"

Blue

Firefly Card



6

"Show trust like a turtle giving a ride to a kangaroo - sure, it may seem unconventional, but sometimes, you just have to go out on a limb!"

Yellow

Firefly Card



7

"Build trusting relationships like a squirrel sharing its nut stash with a chipmunk - sure, it's a leap of faith, but having that acorn of trust is worth it!"

Red

Firefly Card



7

"Harness creativity knowing that every masterpiece starts with a splash of inspiration!"

Blue

Firefly Card



7

"Sustain optimism like a dung beetle rolling a ball of positivity uphill - sure, it may seem like a crappy job, but every uphill battle is a chance to compost!"

Yellow

Firefly Card



8

"Persevere like a sloth climbing a tree - sure, it may take a while, but slow and steady you will get there!"

Red

Firefly Card



8

"Conquer self-discovery like a snail in a speed-dating event—take it slow, savour the interactions, and let your unique shell shine!"

Blue

Firefly Card



8

"Dive into self-awareness like a dolphin diving into deep waters, where the treasures of wisdom are found!"

Yellow

Firefly Card



9

"Cultivate a learning mindset like a cat trying to understand quantum physics - sure, it may seem purr-plexing, but curiosity is the cat's meow of enlightenment!"

Red

Firefly Card



9

"Sustain optimism like a plant growing through cracks in the pavement - sure, it may face concrete obstacles, but every bloom is a triumph over the paving stones of pessimism!"

Blue

Firefly Card



9

"Embrace authenticity like a grumpy gnome in a garden of plastic flowers - sure, it may not always blend in, but at least it's real amidst the synthetic smiles!"

Yellow

Firefly Card



10

"Be as authentic as a phoenix with a bad hair day - sure, it may not always look glamorous, but the flames of truth burn bright through the ashes of pretense!"

Red

Firefly Card



10

"Express yourself boldly like a flamingo with a neon paintbrush—because why blend in when you were born to stand out?"

Blue

Firefly Card

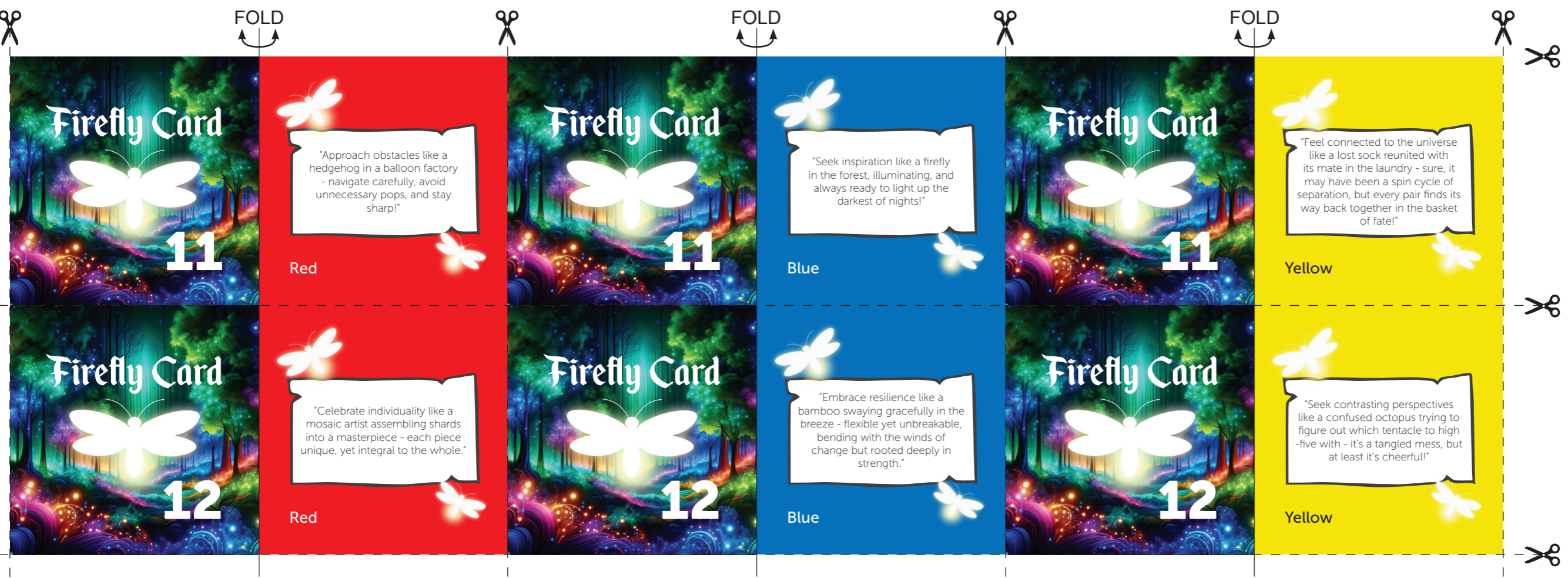


10

"Conquer fears like a giraffe learning to limbo—stretch beyond your comfort zone and reach new heights!"

Yellow





Firefly Card

11

"Approach obstacles like a hedgehog in a balloon factory - navigate carefully, avoid unnecessary pops, and stay sharp!"

Red

Firefly Card

11

"Seek inspiration like a firefly in the forest, illuminating, and always ready to light up the darkest of nights!"

Blue

Firefly Card

11

"Feel connected to the universe like a lost sock reunited with its mate in the laundry - sure, it may have been a spin cycle of separation, but every pair finds its way back together in the basket of fate!"

Yellow

Firefly Card

12

"Celebrate individuality like a mosaic artist assembling shards into a masterpiece - each piece unique, yet integral to the whole."

Red

Firefly Card

12

"Embrace resilience like a bamboo swaying gracefully in the breeze - flexible yet unbreakable, bending with the winds of change but rooted deeply in strength."

Blue

Firefly Card

12

"Seek contrasting perspectives like a confused octopus trying to figure out which tentacle to high-five with - it's a tangled mess, but at least it's cheerful!"

Yellow

Instructions

Introduction

Welcome to the mystical world of Fireflies, a collaborative game set in the heart of the Forest. As the sun sets and dusk envelops the land, tiny ethereal lanterns awaken in the meadows and forests. These are the Fireflies, nature's enchanting emissaries of light, weaving a spellbinding dance across the landscape.

Imagine yourself surrounded by whispering trees and twinkling fireflies. Each flicker of light takes you and your group to a mythical animal, offering counsel and companionship, sharing ancient wisdom and tales of resilience. In their presence, experience the profound connection between nature and spirit. Are you ready to embark on this journey of exploration and introspection, delving into the mysteries of the Forest with every flicker of light as your guide?

Objective

In a world filled with dilemmas, it is our task to navigate it. In this collaborative game, your group will reflect on dilemmas, gather fireflies, sparks of light in darkness, guiding you to mythical animals with ancient knowledge.

The game prompts deep reflection, offering transformative experiences with each dilemma. Fireflies symbolize hope, leading you to encounters with mythical animals and their ancient wisdom. Through collaboration, gather fireflies, unveiling profound truths in the dance of light and shadow.

How to play

1. Set up the board according to the image "Board Set-up" on the other side of the "Instructions".
2. Give each player a TURN PLAYER/CO-PLAYER card as a guide to play the rounds.
3. Roll the dice and the highest number is the TURN PLAYER and the rest are CO-PLAYER. All players will draw 3 Questions Cards each.
4. The TURN PLAYER starts with their steps on the "Steps for TURN PLAYER card". CO-PLAYERS start with theirs.
5. After all steps on the card has been completed, the player to the right of the TURN PLAYER is the new TURN PLAYER. Repeat this after all players have been a TURN PLAYER.
6. At the end of the game combine the colour combinations of your collected fireflies and find the corresponding animal according to the "Colour Wheel". Draw the corresponding "Power Animal Card" and share their wisdom with the group.
7. Everyone shares what the wisdom of the Power Animal Card means for them. This marks the end of the game.

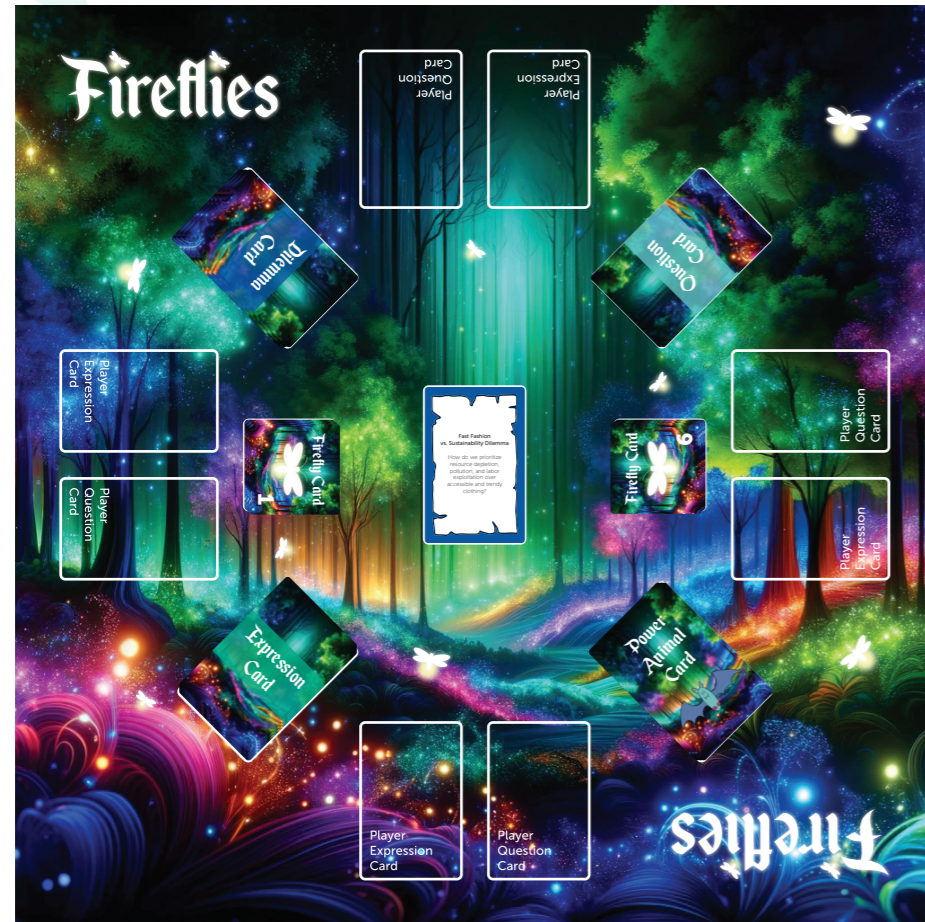
Colour Wheel



- Dominant Blue, Yellow OR Red fireflies = Koala (Blue), Mouse (Yellow) or Owl (Red)
- Equal 2 colour combinations e.g. 4 Yellow and 4 Blue = Boar (Green)
- Unequal 2 colour combinations e.g. 6 Yellow and 2 Blue = Deer (Light Green)
- All three colours equally = your choice of animal!

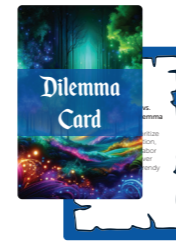
Materials

Board Set-up



Credits: Ana Vasques, Shen Liu, Sandra Lousberg, Berdil Tosun, Pablo Ortiz, Sascha Bol, &Ranj
Game Design: Ana Vasques, Sandra Lousberg, Berdil Tosun, Shen Liu
Illustrations: Sandra Lousberg, ChatGPT
 © 2024

Contact Information:
 For inquiries or support, contact: vasques@euc.eur.nl or cli@eur.nl
 All rights reserved. Fireflies is a trademark of Erasmus Universiteit Rotterdam



Dilemma Cards

The TURN-PLAYER either draws a new dilemma card or keeps the one that the previous TURN-PLAYER had (depending on your preference) and places it face up in the middle of the game board.



Expression Cards

The TURN-PLAYER shuffles the pile and picks 5 expression cards to choose from when faced with a dilemma. They pick the expression card that best matches their feelings about the dilemma on the board.



Question Cards

After the TURN-PLAYER explains their feelings in relation to the dilemma with the help of the expression card, the CO-PLAYERS help the TURN-PLAYER to dive deeper by sharing one card each with a surprising or thought-provoking question. The TURN-PLAYER will then choose one question to answer out loud.



Power Animal Cards

This animal represents the power card of the group's firefly collection, and you can pick the corresponding power animal card and read it with the group. Everyone shares what the wisdom of the Power Animal Card means for them. This marks the end of the game.



Firefly Cards

When a CO-PLAYER rolls the dice, they can collect a Firefly Card with the corresponding number for them to read to the group and keep for themselves.

FOLD

Steps for TURN PLAYER

- Step 1** Draw a **Dilemma Card**, read it aloud and place it face up in the center of the game board.
(If there is already a Dilemma Card face up on the table, you may choose to either keep that Dilemma Card or draw a new one. In another scenario, you can write your own dilemma by taking a pen and paper.)
- Step 2** Draw 5 **Expression Cards** and choose one that best represents your feelings about the dilemma. Place that **Expression Card** on the game board, shuffle the rest back, and explain out loud why you chose this card to other players.
(If none of the expression cards accurately reflect your feelings, feel free to create a drawing on a piece of paper and explain the meaning behind it.)
- Step 3** Step for CO-PLAYER
- Step 4** Shuffle the given **Question Cards**, read them aloud and pick the question you'd like to answer and answer it. *(Additionally explain why you chose that specific question).*
- Step 5** Step for CO-PLAYER
- Step 6** Choose a keyword/ a phrase/a single sentence that resonates the most with you.
- Step 7** Step for CO-PLAYER
- Step 8** Step for CO-PLAYER
- Step 9** This turn is over. Pass your turn to the player to your right and flip this card around.

Steps for TURN PLAYER

- Step 1** Draw a **Dilemma Card**, read it aloud and place it face up in the center of the game board.
(If there is already a Dilemma Card face up on the table, you may choose to either keep that Dilemma Card or draw a new one. In another scenario, you can write your own dilemma by taking a pen and paper.)
- Step 2** Draw 5 **Expression Cards** and choose one that best represents your feelings about the dilemma. Place that **Expression Card** on the game board, shuffle the rest back, and explain out loud why you chose this card to other players.
(If none of the expression cards accurately reflect your feelings, feel free to create a drawing on a piece of paper and explain the meaning behind it.)
- Step 3** Step for CO-PLAYER
- Step 4** Shuffle the given **Question Cards**, read them aloud and pick the question you'd like to answer and answer it. *(Additionally explain why you chose that specific question).*
- Step 5** Step for CO-PLAYER
- Step 6** Choose a keyword/ a phrase/a single sentence that resonates the most with you.
- Step 7** Step for CO-PLAYER
- Step 8** Step for CO-PLAYER
- Step 9** This turn is over. Pass your turn to the player to your right and flip this card around.

Steps for CO-PLAYER

- Step 1** Listen to the chosen **Dilemma Card** of the TURN PLAYER.
- Step 2** Listen to the explanation of their feelings in relation to the **Expression Card** and then read your three **Question Cards** by yourself.
- Step 3** Choose one of the three available **Question Cards** that you want to ask to the TURN PLAYER in according to their take on the dilemma. Give it to the TURN Player face down. Draw a new **Question Card** for the next round.
- Step 4** Listen carefully to the answer given by TURN PLAYER. If your question card is answered, you get to roll the dice and get the **Firefly Card** with the corresponding number. Wait till step 8 to read the firefly card.
- Step 5** Take your time to think and tell a keyword/ a phrase/ a single sentence that would best summarise their speeches towards the dilemma to the TURN PLAYER.
- Step 6** Step for TURN PLAYER
- Step 7** If your keyword/phrase/single sentence is chosen, you can get a dice roll and choose the firefly according to that number.
- Step 8** Whoever has a **Firefly Card** this turn, please read it out loud to the group. After reading, set the card aside for yourself.
- Step 9** This turn is over. If you are the next TURN PLAYER, flip this card around.

Steps for CO-PLAYER

- Step 1** Listen to the chosen **Dilemma Card** of the TURN PLAYER.
- Step 2** Listen to the explanation of their feelings in relation to the **Expression Card** and then read your three **Question Cards** by yourself.
- Step 3** Choose one of the three available **Question Cards** that you want to ask to the TURN PLAYER in according to their take on the dilemma. Give it to the TURN Player face down. Draw a new **Question Card** for the next round.
- Step 4** Listen carefully to the answer given by TURN PLAYER. If your question card is answered, you get to roll the dice and get the **Firefly Card** with the corresponding number. Wait till step 8 to read the firefly card.
- Step 5** Take your time to think and tell a keyword/ a phrase/ a single sentence that would best summarise their speeches towards the dilemma to the TURN PLAYER.
- Step 6** Step for TURN PLAYER
- Step 7** If your keyword/phrase/single sentence is chosen, you can get a dice roll and choose the firefly according to that number.
- Step 8** Whoever has a **Firefly Card** this turn, please read it out loud to the group. After reading, set the card aside for yourself.
- Step 9** This turn is over. If you are the next TURN PLAYER, flip this card around.

FOLD

Steps for TURN PLAYER

- Step 1** Draw a **Dilemma Card**, read it aloud and place it face up in the center of the game board.
(If there is already a Dilemma Card face up on the table, you may choose to either keep that Dilemma Card or draw a new one. In another scenario, you can write your own dilemma by taking a pen and paper.)
- Step 2** Draw 5 **Expression Cards** and choose one that best represents your feelings about the dilemma. Place that **Expression Card** on the game board, shuffle the rest back, and explain out loud why you chose this card to other players.
(If none of the expression cards accurately reflect your feelings, feel free to create a drawing on a piece of paper and explain the meaning behind it.)
- Step 3** Step for CO-PLAYER
- Step 4** Shuffle the given **Question Cards**, read them aloud and pick the question you'd like to answer and answer it. *(Additionally explain why you chose that specific question).*
- Step 5** Step for CO-PLAYER
- Step 6** Choose a keyword/ a phrase/a single sentence that resonates the most with you.
- Step 7** Step for CO-PLAYER
- Step 8** Step for CO-PLAYER
- Step 9** This turn is over. Pass your turn to the player to your right and flip this card around.

Steps for TURN PLAYER

- Step 1** Draw a **Dilemma Card**, read it aloud and place it face up in the center of the game board.
(If there is already a Dilemma Card face up on the table, you may choose to either keep that Dilemma Card or draw a new one. In another scenario, you can write your own dilemma by taking a pen and paper.)
- Step 2** Draw 5 **Expression Cards** and choose one that best represents your feelings about the dilemma. Place that **Expression Card** on the game board, shuffle the rest back, and explain out loud why you chose this card to other players.
(If none of the expression cards accurately reflect your feelings, feel free to create a drawing on a piece of paper and explain the meaning behind it.)
- Step 3** Step for CO-PLAYER
- Step 4** Shuffle the given **Question Cards**, read them aloud and pick the question you'd like to answer and answer it. *(Additionally explain why you chose that specific question).*
- Step 5** Step for CO-PLAYER
- Step 6** Choose a keyword/ a phrase/a single sentence that resonates the most with you.
- Step 7** Step for CO-PLAYER
- Step 8** Step for CO-PLAYER
- Step 9** This turn is over. Pass your turn to the player to your right and flip this card around.

Steps for CO-PLAYER

- Step 1** Listen to the chosen **Dilemma Card** of the TURN PLAYER.
- Step 2** Listen to the explanation of their feelings in relation to the **Expression Card** and then read your three **Question Cards** by yourself.
- Step 3** Choose one of the three available **Question Cards** that you want to ask to the TURN PLAYER in according to their take on the dilemma. Give it to the TURN Player face down. Draw a new **Question Card** for the next round.
- Step 4** Listen carefully to the answer given by TURN PLAYER. If your question card is answered, you get to roll the dice and get the **Firefly Card** with the corresponding number. Wait till step 8 to read the firefly card.
- Step 5** Take your time to think and tell a keyword/ a phrase/ a single sentence that would best summarise their speeches towards the dilemma to the TURN PLAYER.
- Step 6** Step for TURN PLAYER
- Step 7** If your keyword/phrase/single sentence is chosen, you can get a dice roll and choose the firefly according to that number.
- Step 8** Whoever has a **Firefly Card** this turn, please read it out loud to the group. After reading, set the card aside for yourself.
- Step 9** This turn is over. If you are the next TURN PLAYER, flip this card around.

Steps for CO-PLAYER

- Step 1** Listen to the chosen **Dilemma Card** of the TURN PLAYER.
- Step 2** Listen to the explanation of their feelings in relation to the **Expression Card** and then read your three **Question Cards** by yourself.
- Step 3** Choose one of the three available **Question Cards** that you want to ask to the TURN PLAYER in according to their take on the dilemma. Give it to the TURN Player face down. Draw a new **Question Card** for the next round.
- Step 4** Listen carefully to the answer given by TURN PLAYER. If your question card is answered, you get to roll the dice and get the **Firefly Card** with the corresponding number. Wait till step 8 to read the firefly card.
- Step 5** Take your time to think and tell a keyword/ a phrase/ a single sentence that would best summarise their speeches towards the dilemma to the TURN PLAYER.
- Step 6** Step for TURN PLAYER
- Step 7** If your keyword/phrase/single sentence is chosen, you can get a dice roll and choose the firefly according to that number.
- Step 8** Whoever has a **Firefly Card** this turn, please read it out loud to the group. After reading, set the card aside for yourself.
- Step 9** This turn is over. If you are the next TURN PLAYER, flip this card around.