

design of places for care

Ir. AnneMarie Eijkelenboom EDAC
project architect







8 OUT OF 10
POSTCARDS
MENTION THE
WEATHER



The Weatherproject, Eliasson, Tate, 2003

healthcare facility \neq museum

process of designing places

collaboration



scientific studies

laws + building regulations

architectural vocabulary

urban restrictions

finances

characteristics building site

cultural context

wishes client

functional needs

occupants

dreams client

(multi)functional

ergonomics

imago

maintenance

sustainable

comfort

health

beauty

safe

flexible

timeline

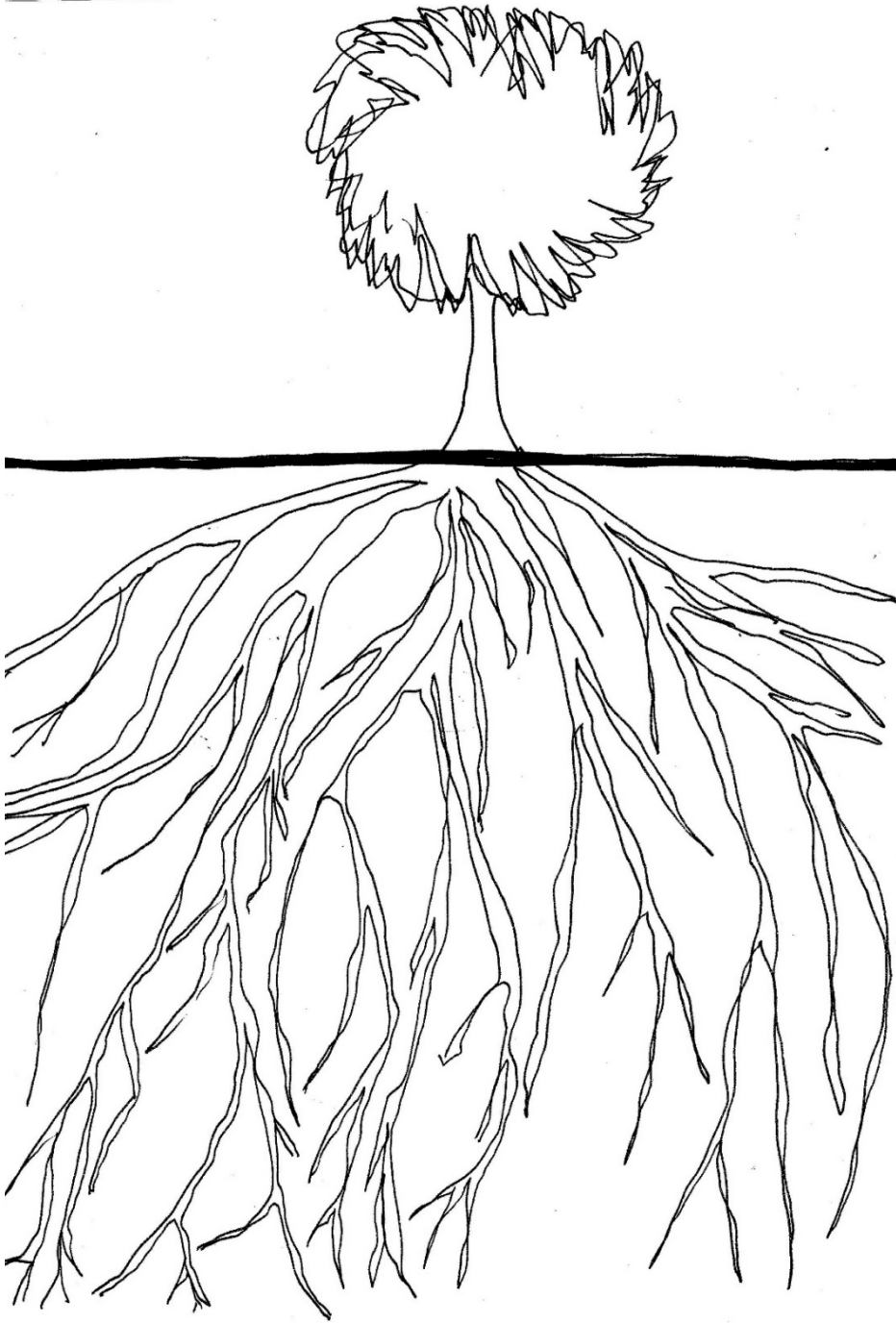
timeline: design, construction and occupancy





built environment affects health





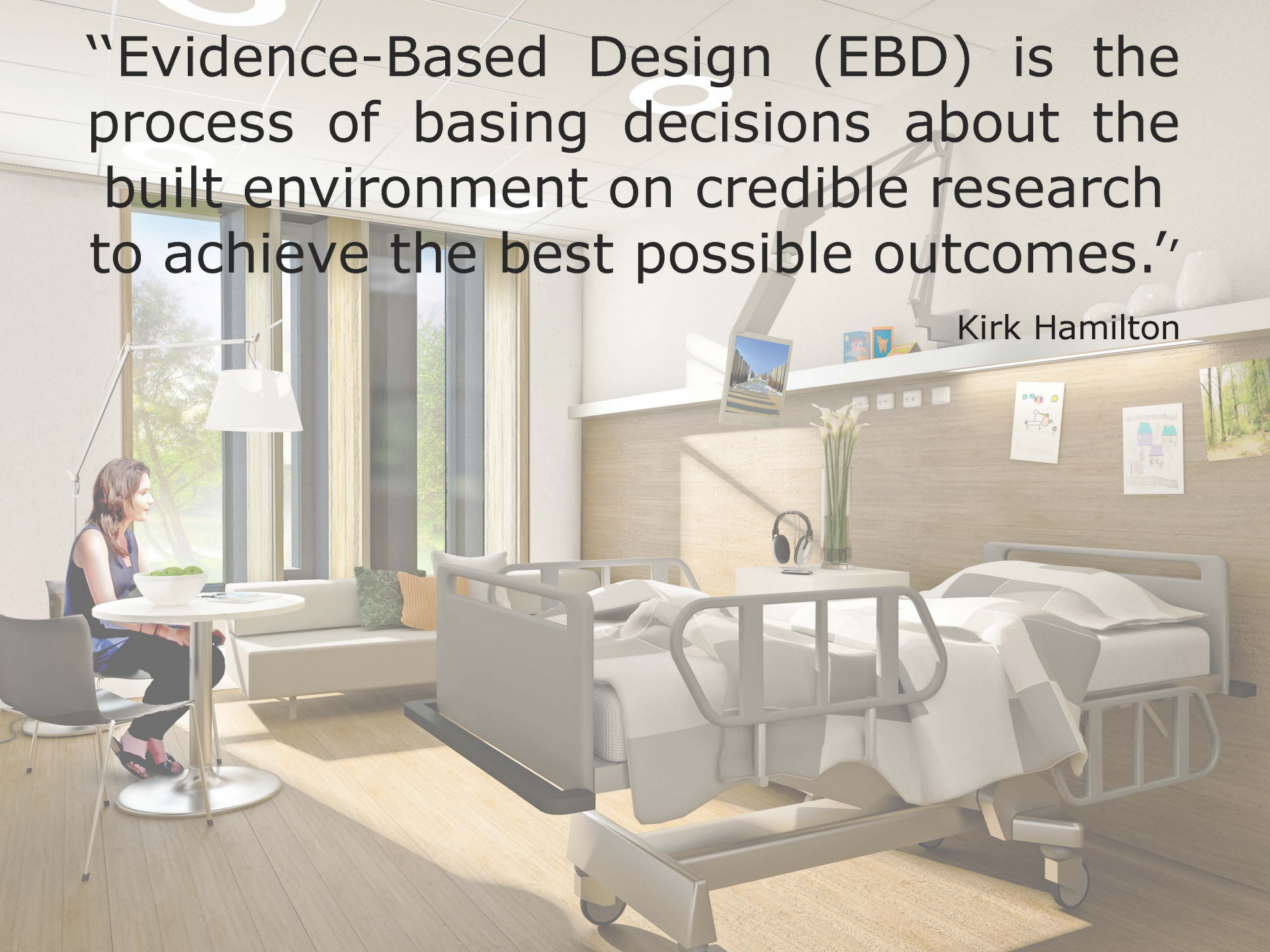
healing environment

evidence based design

scientific research

“Evidence-Based Design (EBD) is the process of basing decisions about the built environment on credible research to achieve the best possible outcomes.”

Kirk Hamilton



fall incidents

pain medication

duration of stay

stress

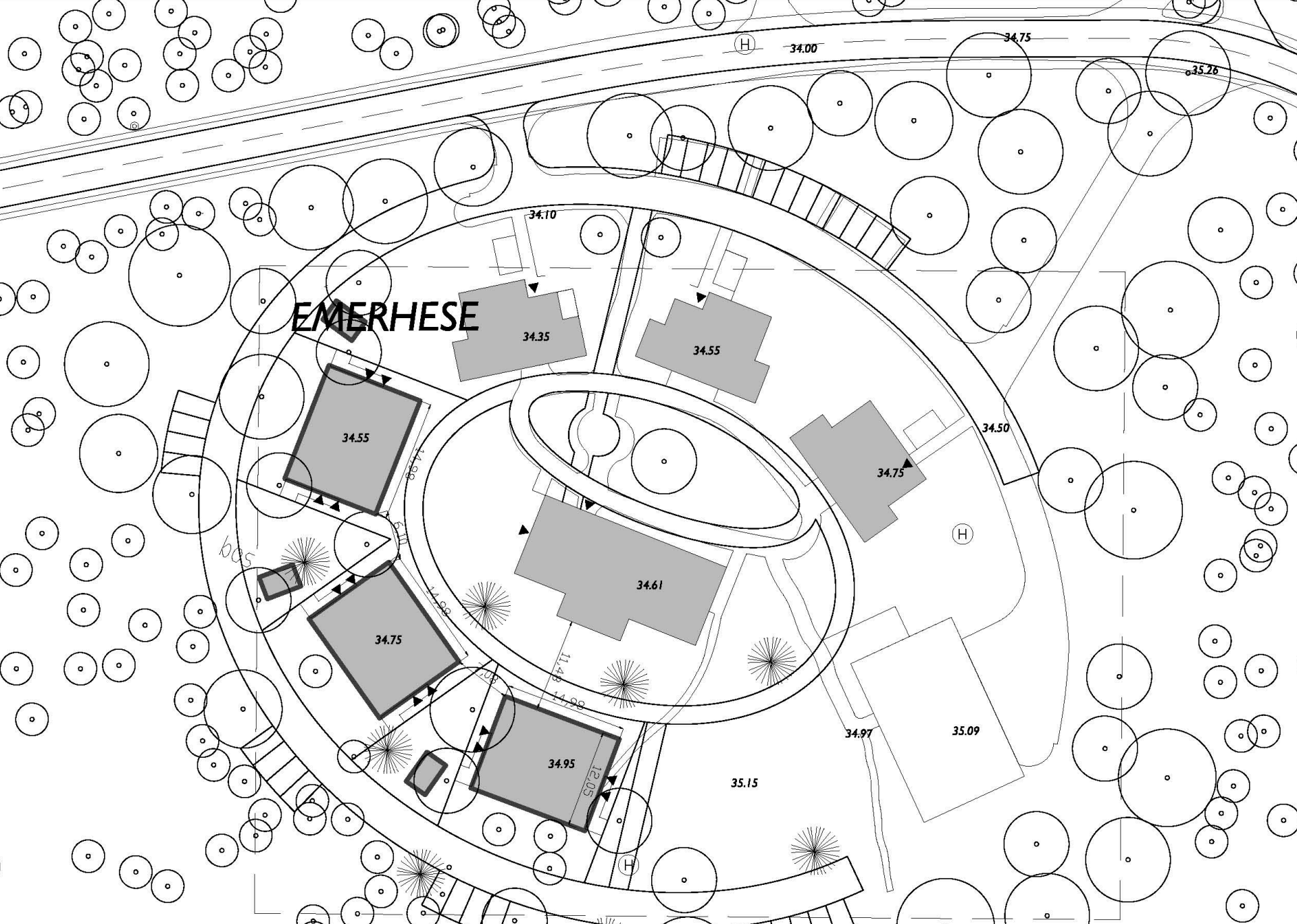
hospital acquired
infections

distraction





housing for people with autism



EMERHESE

housing for people with autism, Emerhese, Amersfoort



housing for people with autism, Emerhese, Amersfoort



housing for people with autism, Emerhese, Amersfoort

pediatric mental health hospital



paediatric mental health hospital, Centrum Jeugd, Breda



paediatric mental health hospital, Centrum Jeugd, Breda



paediatric mental health hospital, Centrum Jeugd, Breda



paediatric mental health hospital, Centrum Jeugd, Breda

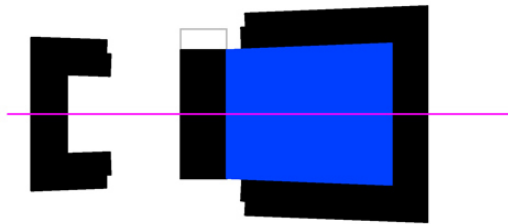


paediatric mental health hospital, Centrum Jeugd, Breda

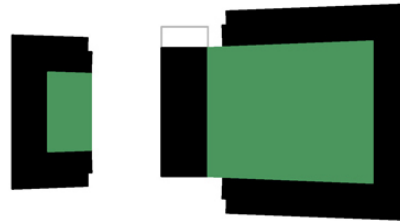


paediatric mental health hospital, Centrum Jeugd, Breda

centre for child protection



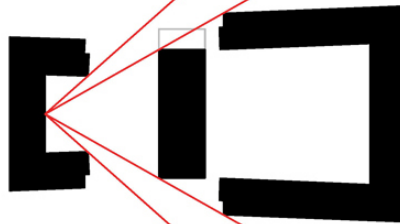
vorm binnenhof:
uitlijnen bebouwing
duidelijke richting



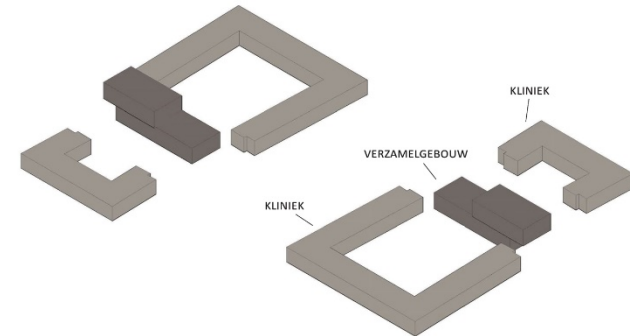
verwantschap vorm
kleine en grote kliniek



zichtlijnen binnenhof:
uitzicht naar buiten



zichtlijnen kleine kliniek:
uitzicht op landschap





centre for child protection, Schakenbosch, Leidschendam



centre for child protection, Schakenbosch, Leidschendam



centre for child protection, Schakenbosch, Leidschendam

personal preferences



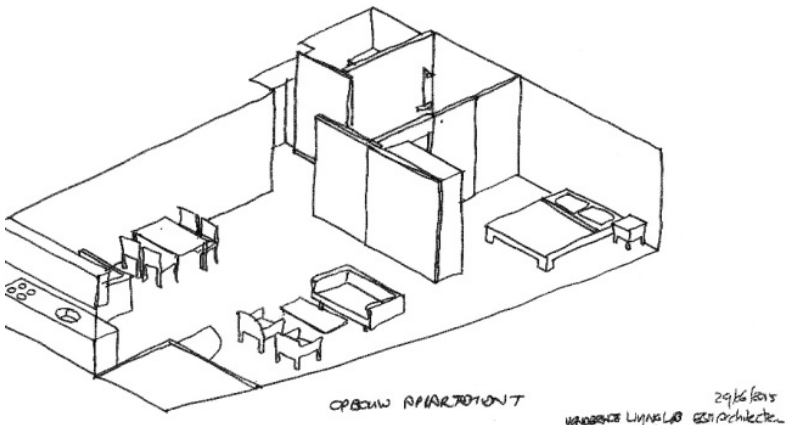
sense of home in nursing homes



literature review



focus groups



living lab

Literature review

Overview of factors composing a sense of home in nursing homes

	Social factors	The built environment
Psychological factors:	5. Interaction and relationship with staff	10. The private space
1. Sense of acknowledgement	6. Interaction with other residents	11. The (quasi) public space
2. Preservation of one's habits and values	7. Interaction with family and friends	12. Personal belongings
3. Autonomy and control	8. Interaction with pets	13. Technology
4. Coping	9. Activities	14. Look and feel
		15. Outdoors and location



Psychological factors

Zonder geheugen de wijde wereld

Wie dement is en naar een verpleeghuis gaat, komt meestal achter slot en grendel. Een aantal verpleeghuizen probeert de weg naar buiten weer te openen. „Ik ben de enige van het zootje die dit mag.”

Tekst Joke Mat Foto's David van Dam

David van Dam & Joke Ma © 6 februari 2016



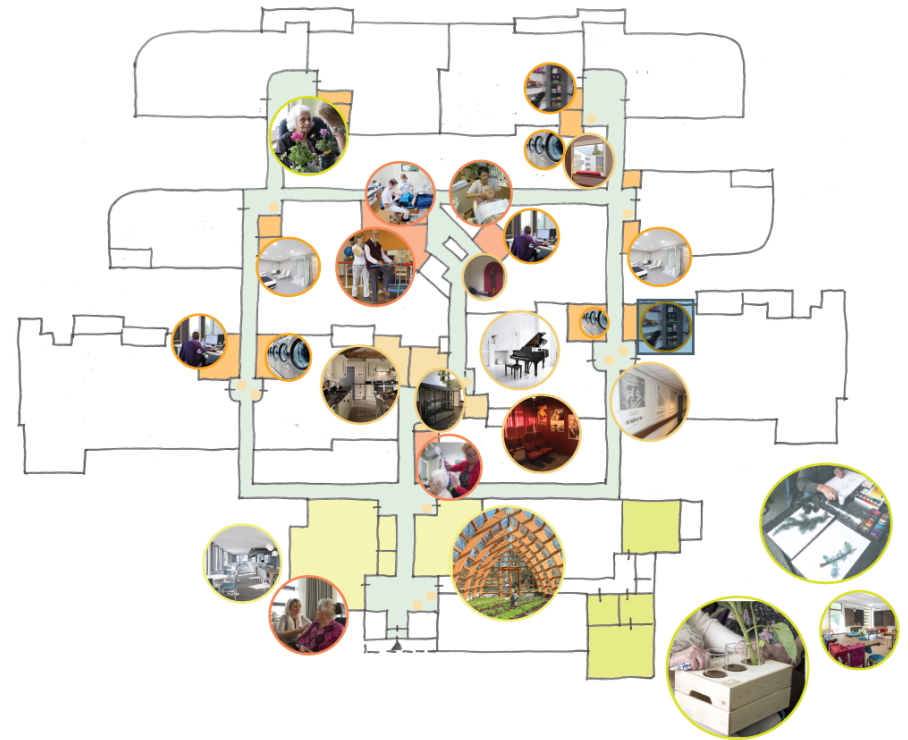
sense of
acknowledgement

preservation of one's
habits

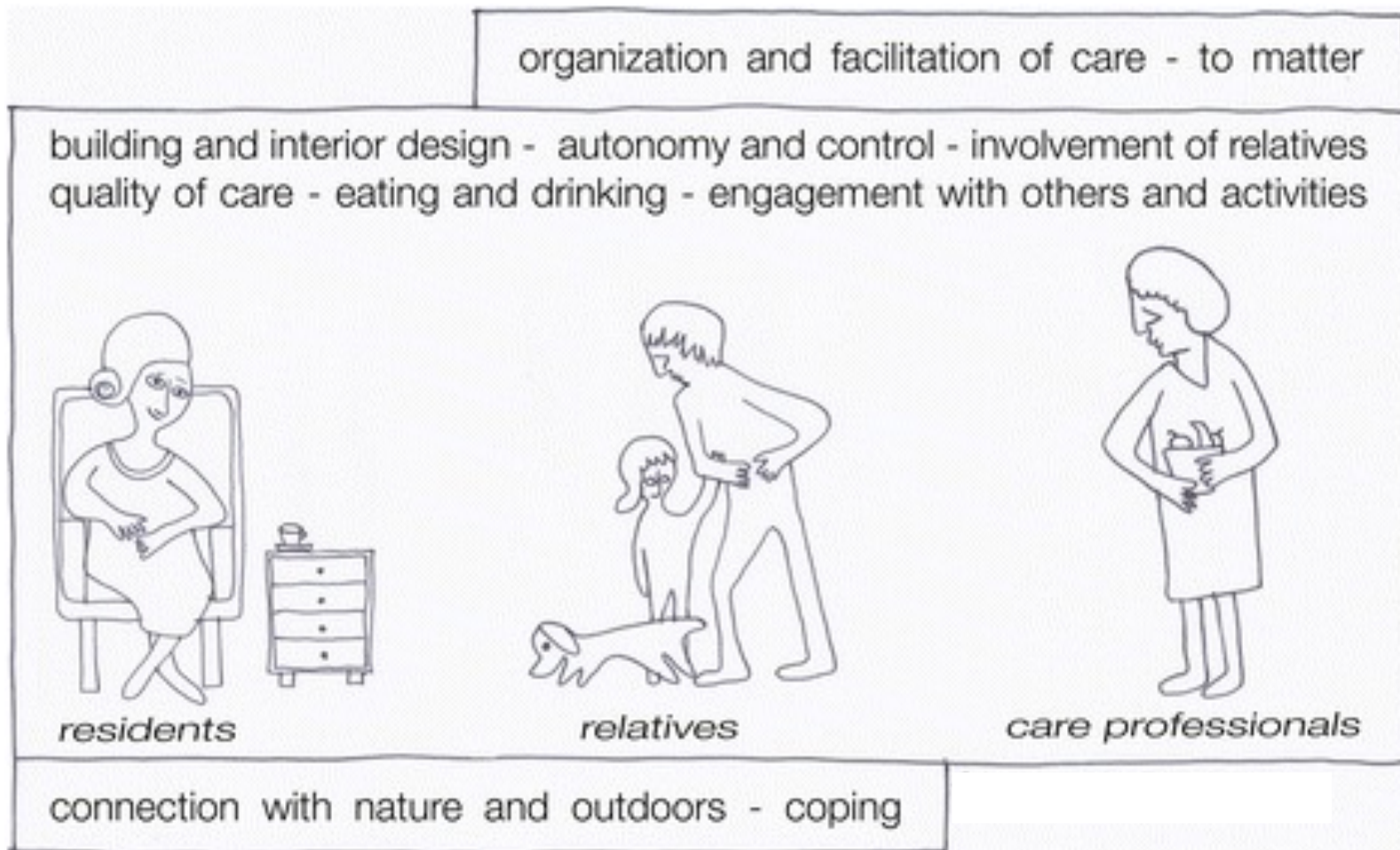
coping

autonomy and control

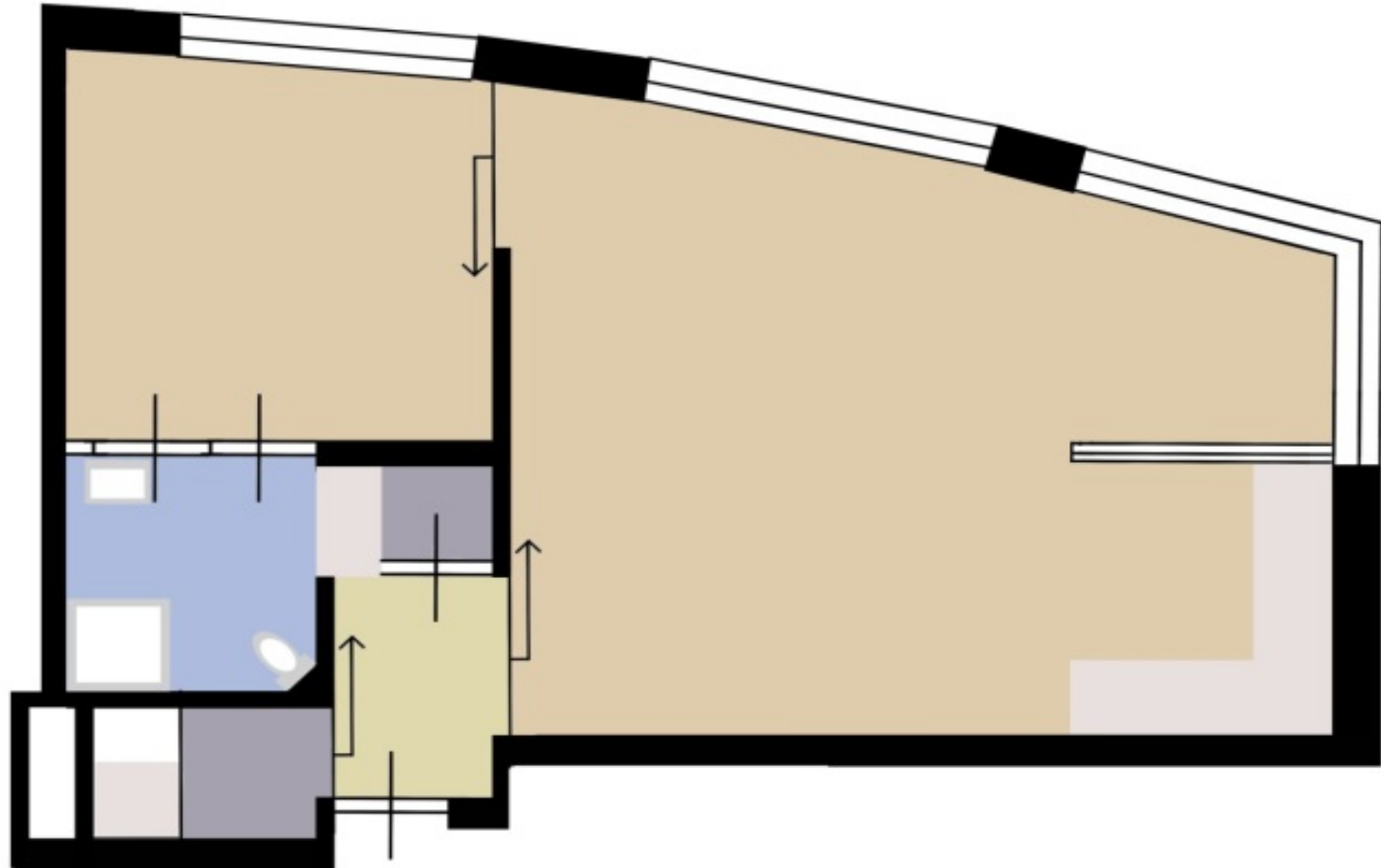
Social factors

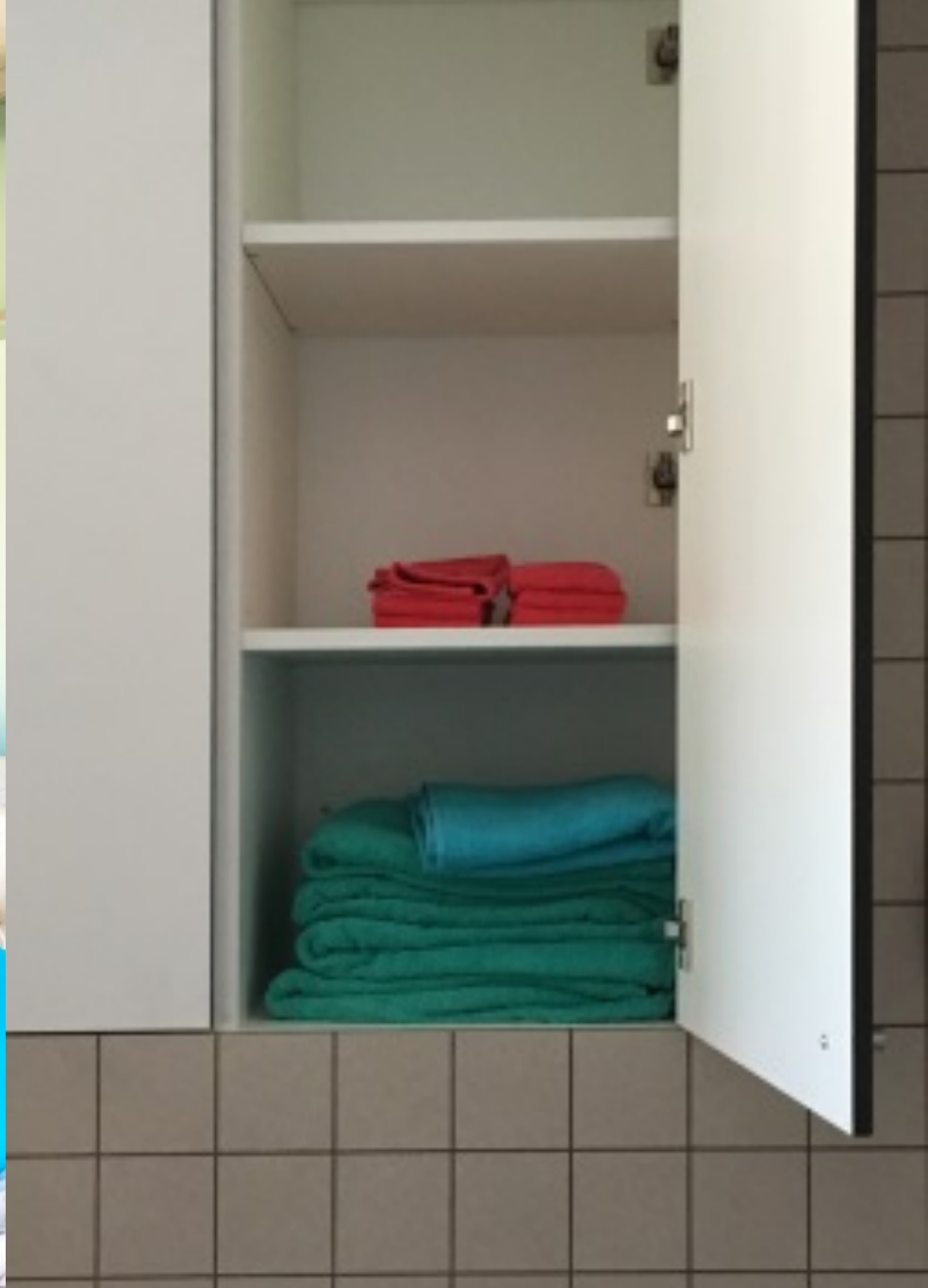


Focus groups



Vitalis Living Lab Vonderhof





Living Lab Vonderhof, in collaboration with Fontys, Maastricht University, Vitalis, Eindhoven



portrait W. Kentridge

first do no harm

Pictures slide 3 <http://www.tate.org.uk/whats-on/tate-modern/exhibition/unilever-series/unilever-series-olafur-eliasson-weather-project-0> , slide 35 NRC Handelsblad 6 February 2016, slide 40 <http://arhiva.dalje.com/en/foto.php?id=26&rbr=20835&idrf=862330>

All other pictures by EGM Architects

Photographers: slide 1 A. Seredyn, slide 9 picture 4 J.Musch, all other by EGM Architects.