

Rotterdam School of Management
Erasmus University

International Business Administration (IBA) 2017-2018



www.eur.nl/english/bachelor/programmes/iba



[www.facebook.com/
RotterdamSchoolofManagementErasmusUniversity](https://www.facebook.com/RotterdamSchoolofManagementErasmusUniversity)



www.youtube.com/rsmerasmusuniversity



www.twitter.com/RSMErasmus



Application deadline: 15 January 2017

Erasmus University Rotterdam
Make it happen.





Welcome

You are about to embark on a truly international academic journey. Rotterdam School of Management (RSM) is the business school of Erasmus University Rotterdam, and partly thanks to our bachelor in International Business Administration (IBA), the school deserves its international profile and triple accreditation - and you can see this in our students.

The best way to prepare for international business is to join a highly international study environment, whether you learn about investment banking or agricultural business in China. There are around 60

nationalities in the intercultural classroom of the IBA's first year.

In fact, the IBA is the first programme to be awarded the 'excellent' distinction for internationalisation from the Dutch-Flemish Accreditation Organisation NVAO.

Come and join our international community!

Professor Steef van de Velde
Dean, Rotterdam School of Management,
Erasmus University

Table of contents

Curriculum	4
Testimonial Knut Gjertsen	6
How to make the most of your studies	7
Dialogue	8
Admission	10
After your studies	12
Testimonial Björn Zimmermann	13
IBA in practice	14
IBA facts	15
5 good reasons	16
Arrange your studies	18
Study in the Netherlands	20
Study in Rotterdam	22
Partner universities worldwide	24
What's next?	27

Colophon

Design: Fabrique

Photography: Sanne van der Most, Levien Willemse, Chris Gorzeman, Michelle Muus, Rick Keus, Caren Huygelen, Marc Heeman, Bas Czerwinski, Rotterdam Image Bank

No rights may be derived from the contents of this publication.

Curriculum

Curriculum

RSM's International Business Administration (IBA) programme takes a broad approach and is research-driven.

You will investigate each functional area of business during at least two courses for each topic.

The academic year is divided into three trimesters with four or five courses taught during each. The teaching staff is actively involved in high-calibre academic research and this is reflected in the course work. For most courses, you will attend plenary lectures and work in small groups, allowing for lively interaction and tailored feedback. The three-year programme culminates in a Bachelor of Science (BSc) degree.

The first year

The first year of the IBA bachelor programme provides you with an overview of the main processes in most companies: production, marketing, organisation, finance and information. You will learn about all the relevant dimensions of business administration and management. You will also take a skills development course to learn the communication skills needed to work in multicultural groups. Finally, the first year features our student mentor programme, designed to help you get used to student life at Erasmus University Rotterdam.

Binding study advice

By the end of your first year, you should have successfully passed all your first-year courses. If you fail to do so, you will receive a negative binding study advice. We have set up the IBA programme in such a way that your performance in all courses will be appraised at frequent intervals, enabling you to earn a considerable part of your credits before the final exam. This will guide you into a steady study rhythm which has proved successful and will still leave you sufficient time for doing other things.

Years two and three

In the second year of the IBA programme, you will explore various topics. For example, the course about leadership, sustainability and governance covers sustainability and the increasingly important issue of ethics in business, while cross-cultural management tackles cultural differences in a business environment.

In the first half of the third year, you can choose between an international exchange, an internship or a minor. The global partner network brings spectacular exchanges, whereas internships give you the chance to experience real business situations in-company. The minor option involves a combination of courses to broaden your knowledge. You will conclude the IBA with a bachelor thesis.

Sample exercise

The 1990s and 2000s saw more 'beta whiz kids' – students with exceptional talents in mathematics – choose careers in commercial banking than in the decades before. Recruitment agencies actively searched for these people, backed by financial companies eager to pay for them. Once hired, they put their talents to work applying complex mathematical formulas to innovative mortgage bonds and sub-prime lending. The banking world put huge resources behind selling these highly innovative lending products, reaping high rewards at apparently little risk. Then the economic crisis broke out in 2008. What role did these innovative products play in the cause of the crisis? Compare your views with ours at www.eur.nl/english/bachelor/exercise.

For more information about the curriculum, visit www.rsm.nl/iba.

Course overview

Bachelor 1

Trimester 1		Trimester 2		Trimester 3	
Mentor programme					
Introduction to business	5	Operations management	5	Foundations of finance & accounting	6
QM&T: mathematics	4	QM&T: statistics	4	International business	4
Methodology	3	Strategic business plan	3	Strategic business plan	3
Organisational behaviour	6	Microeconomics & markets	5	Macroeconomics & institutional context	5
Skills 1: IT	2	Skills 2: effective business communication	3	Skills 3: academic writing	2


Bachelor 2

Trimester 4		Trimester 5		Trimester 6	
Quantitative decision making	6	Applied business methods	6	International marketing research	3
Philosophy of science	3	Strategic management	6	Marketing management	5
Organisational theory & dynamics	6	Cross-cultural management	2	CCM international case	3
Corporate finance	5	Management accounting	6	Leadership, sustainability & governance	5
				Technology management	4

Bachelor 3

Trimester 7		Trimester 8		Trimester 9	
International exchange	20	Research training	6	Bachelor thesis	6
or: Internship	15	Human resource management	5	Financial accounting	5
or: Minor	15	Business information management	5	Supply chain management	5
plus (language) elective	5	Foundations of business law	4	Innovation management	4

The numbers in the table refer to the number of credits in ECTS (1 ECTS equals 28 hours).



“Take initiative.
Be part of the change.”

Knut Gjertsen

“At RSM, I have found amazing opportunities to work towards my personal development while simultaneously effectuating change. This year I was a part of a committee that created a three-day event that focused on sustainable business: the Erasmus Sustainability Days. I felt privileged to work with three MSc students and one other BSc student, together representing four nationalities and five unique academic backgrounds. Together, we managed to collaborate with six student organisations, bringing in more than 10 well-respected companies, have former prime minister Jan Peter Balkenende lead our opening ceremony, and sell more than 100 tickets to students.

Looking back, it was all very simple – we started out with our dispersed ideas, which led to valuable contributions, and finally materialised them into a tangible event. It came together simply because we had a vision, coupled with the passion to fulfil it. With a dedicated faculty and a supportive student environment, RSM cultivates motivated students, and fosters an entrepreneurial spirit.”

Knut Gjertsen (Norway)
International Business Administration
Second-year student

How to make the most of your studies

S **tudy abroad**
One of the many attractions of the International Business Administration programme is the possibility of studying abroad when the opportunity arises. International students and students from the Netherlands look forward to the exchange programmes in the third year. RSM offers a wide and attractive network of more than 90 partner business schools for its bachelor exchanges, presented on pages 28-29.

An internship abroad is an alternative to an exchange. You can apply your newly acquired knowledge and skills within a company in a foreign country. Students are often offered a job as a result. Many IBA students in the past have proved they can solve business issues and thus positively contribute to the company's operations.

Study trips, business projects, case competitions
Another way to gain relevant international experience is by joining one of our many international study trips to places such as Hong Kong, Santiago de Chile, New York City or Seoul. Our international business projects take a more academic approach; desk and field research are done for commercial businesses and are supervised by RSM's academic staff.

Conversely, some IBA students are involved in international non-profit organisations such as Enactus, focusing on issues such as sustainable entrepreneurship.

You can also join RSM's Case Society. You can then be selected for international business case competitions, in which teams of four from business schools worldwide compete to solve challenging business cases.

Honours programmes

If you are prepared for a bigger academic challenge, you should know that Erasmus University Rotterdam offers two English-taught honours programmes on interdisciplinary subjects. They bring students from different programmes together to jointly work on a broad subject. What is more, IBA students can also apply for RSM's undergraduate honours programme on innovative entrepreneurship and a study trip to Silicon Valley. Honours programmes count as extra credit on top of the regular BSc programme.

Study counselling

Balancing studies and other activities can be a challenge. Many students appreciate our mentor programme. It assigns freshmen to a second-year student to help them find their way at the university and in Rotterdam: how to study and how to plan ahead. More personal matters are swiftly referred to trained student advisors.

Dialogue

Miruna Carlugea, student

"As an international student, IBA equipped me with the right tools for a career in a managerial setting through excellent, hands-on academic preparation. IBA's international dimension enabled me to develop myself, acquire new skills and broaden my horizons. As a mentor for first-year students, I developed my creativity and leadership skills as I had to guide and plan classes for a group of 15 students. I became a mentor co-ordinator two years later, which allowed me to provide a four-day training for a group of 31 mentors, and to further improve my communication and people skills. Together with my colleagues I was also in charge of recruiting the mentors, which was a lot of fun! All in all, IBA provides students with a broad range of opportunities, for academic or personal development purposes. For me, the IBA community made me discover the beauty of being constantly exposed to various cultures."



Gabriele Jacobs, academic director

"Starting your studies is an important and exciting step in your life. It brings a lot of new challenges and experiences, you meet new people, learn new concepts and new ideas, and your world gets bigger. Studying international business administration is an important stepping stone for the role you will play in organisations and in society at large. Working in diverse groups in international contexts is what brings the most joy and inspiration to my professional life. I'm proud that the term 'international' in IBA is not an empty promise. You'll spend three years in a truly international classroom and you will work with our very international faculty. I'll do my best to help provide a learning environment in which you can develop the relevant competencies for working in a global context. This includes empathy and respect, critical reflection on your own culture, and the appreciation of diversity. I wish you a mind-broadening study experience in IBA!"

Admission

Admission requirements

To be considered for the IBA programme you need a secondary school diploma which gives you access to university-level education in your own country. You must also meet the following additional requirements:

- you should have taken mathematics at least at calculus level
- you should bring a sufficient result for TOEFL or IELTS (English-language test).

For specific requirements per diploma, and for minimum levels and score requirements for mathematics and English, please visit

www.rsm.nl/bacheloradmissions.

When to apply?

You need to apply through the Dutch national student registration system 'Studielink' between **1 October 2016** and **15 January 2017**. Failure to meet the deadline means that you cannot participate in the selection process.

Numerus fixus

RSM's IBA admits a maximum of 575 students each year. You will be included in our ranking of applicants if you have sent in your application before **15 January**, meet the formal requirements and uploaded the required documents in our online application system OLAF not later than **15 February 2017**. Your place in the ranking will be determined by your grade point average (GPA), your grade for mathematics, your CV and your answers to our questions about your motivation. Applicants with ranking numbers 1-575 will immediately receive a place in the programme. Studielink and RSM will inform you about this on **15 April 2017**. Applicants with ranking numbers 576 and higher will be put on a waiting list. If students drop out from the ranking, places will be offered to students on the waiting list, following the ranking order.

Increasing your odds

Important characteristics of the IBA programme are its international dimension and high-performing



students. Admission to the IBA programme is therefore based on your academic performance as reflected by your overall grade point average and your motivation for the international character of the programme as reflected in your CV and motivation. Here's how we'll calculate your ranking:

- Your GPA, as this will be calculated from your school report of the before-last school year, counts for 50%. Points will only be awarded if they are above the minimum requirement per diploma, details of which can be found on the page 'selection criteria per diploma' on our website. A low grade for mathematics will put you in the lowest tier of the ranking.
- Your CV counts for 25% in the ranking, and should give us sufficient insight in your international background and experiences. The more international your CV is, the higher your place will be in the ranking.

RSM is a member of
CIS: the Council of
International Schools.

www.cois.org



- Your answers to our four motivation questions also count for 25%. Our questions focus on your potential and your eagerness to participate in a multicultural group of students. The more excelling your answers on the questions are, the higher your place will be in the ranking.

Application

The application process consists of two parts:

PART I: registration for the IBA programme in the Dutch national student registration system Studielink (www.studielink.nl) between **1 October 2016** and **15 January 2017**.

PART II: fill in and submit RSM's Online Application Form. You will receive a link to this form within 24 hours after successful registration in Studielink.

Before **15 February 2017**, you must:

- upload all required documents, including academic transcripts, relevant test results like TOEFL/IELTS, mathematics subjects, valid passport and your CV
- answer the motivation questions.

All applicants who submitted a complete application in the online application form (OLAF) will receive a rank number via email from Studielink on **15 April 2017**. Applicants with rank number 1 to 575 will also receive a second email from Studielink with an offer for the programme.

Applicants with rank number 576 and higher will automatically be put on a waiting list. Applicants offered admission to the IBA programme (initially or from the waiting list) will **have two weeks to accept or decline the offer in Studielink**. For detailed information regarding RSM's admission requirements and process please visit www.rsm.nl/bacheloradmissions.

After your studies

Once you graduate from IBA the world is your oyster. For example, you can choose to continue your studies at Erasmus University with a master degree, transfer to a (partner) school abroad or to begin your professional career.

One-year master programmes at RSM

- Accounting & Financial Management
- Business Information Management
- Finance & Investments
- Finance & Investments Advanced
- Global Business & Sustainability
- Human Resource Management
- Management of Innovation
- Marketing Management
- Organisational Change & Consulting
- Strategic Entrepreneurship
- Strategic Management
- Supply Chain Management
- MPhil in Business Research (two years)

CEMS: acclaimed collaboration

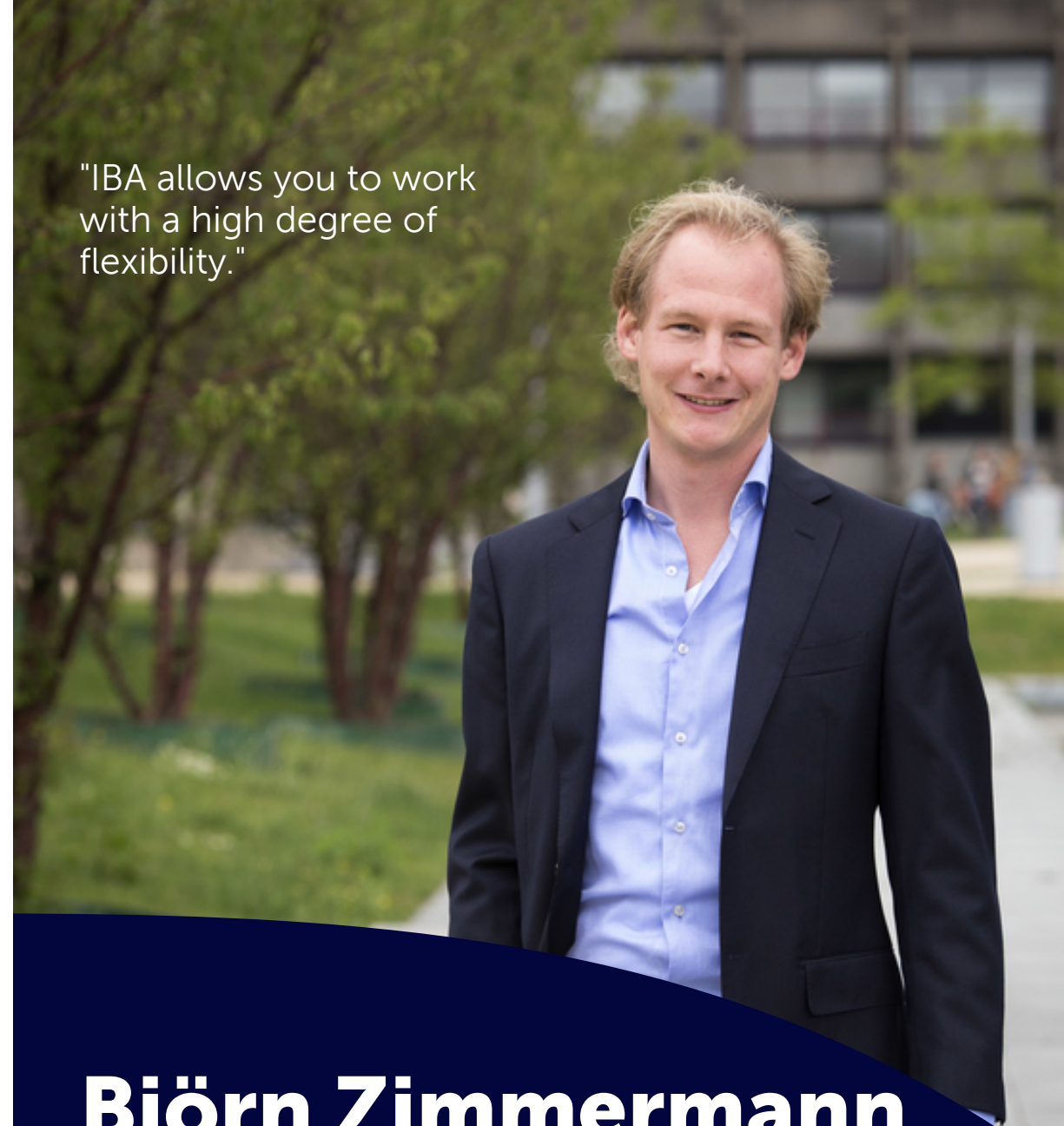
RSM also proudly offers the MSc in International Management/CEMS, a joint programme by several leading business schools from Europe and beyond which has a broad remit and requires the mastery of three languages. CEMS has been ranked one of the world's best business programmes by the Financial Times for seven consecutive years.

Career opportunities

Some IBA graduates walk straight into a career or set up their own company, but most continue with a master programme first, because this improves their career perspectives. Sometimes, large multinational firms hire master graduates prior to graduation, based on internships and other networking experiences. The main employment sectors and the percentages of IBA graduates entering each, are as follows: consulting (20%), finance and accounting (20%), marketing and communications (15%), owner-entrepreneur (10%), human resources (10%), policy advising (5%) and other business areas (20%).

Our career services office can assist you in finding internships and with 30,000+ alumni in more than 100 countries, RSM's alumni network is truly global and provides invaluable job and internship opportunities.

"IBA allows you to work with a high degree of flexibility."



Björn Zimmermann

"After I graduated from RSM, I started working as an executive assistant to the CEO for a holding that runs enterprises in Germany, Belgium and the Netherlands, providing all services of the railway system. Within my job, I work as an internal consultant and support not only the holding management but also the management teams and projects of the subsidiaries across Europe. The IBA programme has some lasting benefits which support me in my daily work. For example, the international student community taught me how to live and work in foreign countries.

The broad portfolio of classes taught me the theory of running a business. Also, the IBA courses require students to be able to think about a wide range of topics in a short space of time. This allows me now to work with a high degree of flexibility, on very different projects, in various settings."

Björn Zimmermann (Germany)
International Business Administration
Alumnus

IBA in practice

Career outlook

The Bachelor of Science in International Business Administration prepares you for a management career in international firms by teaching you the latest knowledge and skills in business, and through immersion in an intercultural classroom. Most students specialise in one of the main functions of business: production, organisation, marketing or finance, and your first job will probably be within one of these business areas.

But a company is more than a sum of specialisms. Future managers also need to develop a broader perspective and this is where strategy comes in. Working in culturally diverse teams familiarises IBA students with multinational project management at an early stage, qualifying you for jobs in the international arena.

Challenges for managers

Management requires a broad overview of what's going on, as well as thorough knowledge of the various functions that make a business. Managers can achieve senior positions when they learn how to consider different views and to apply knowledge from various fields.

A profitable company, gaining in market share, is the ultimate goal. There are many ways to get there. Will you keep costs at bay? Will competitors undercut your price? How will you guard intellectual property? What is your marketing strategy? And what about your people? Diversity fosters creative thinking, but not necessarily a harmonious office. And will your activities be sustainable?

Business flourishes when managers balance all these choices. Are you up for the challenge?



Case study

The strategic business plan is a valuable tool for many business-oriented activities. Whether you find yourself in a consulting role, owner of your own business or a division manager, this initial document involves a thorough analysis of the business processes, resources and environment involved, before you present a business strategy for the coming 3-5 years.

During the IBA, you set out to position a company or project in its commercial ecosystem. With your team, you'll gather the required information, meet with knowledgeable experts and apply the theoretical concepts you acquired during your studies. Identify strengths, weaknesses, opportunities and threats. Based on your findings, you'll formulate the best possible strategies for your undertaking.

IBA facts

RSM is consistently ranked among Europe's leading business schools.



Why international business administration?

You study international business administration at RSM for:

- RSM's excellent international reputation, proven by its frequent mentioning in global rankings, such as the Financial Times
- its track record as an AACSB-, EQUIS-, and AMBA-accredited business school
- its maximised return on investment for your career outlook.

Facts and figures

- Student satisfaction overall: 4.1/5
- Number of first-year students: 550
- Contact hours first year: 12 – 18 hours/week
- Duration of programme: three years
- Required amount of ECTS first year: 60
- Retention first to second year: 85 per cent
- Graduating within four years: 80 per cent

Source: National Student Survey 2015, www.studiekeuze123.nl, also allowing comparison to other international business programmes in the Netherlands.

Distinctions

NVAO, the national accreditation organisation for the Netherlands, has awarded the IBA programme the prestigious 'Certificate for Internationalisation' with – for the first time in the Netherlands – the qualification 'excellent'.

International rankings

The Financial Times (FT) annually publishes the most authoritative ranking of international business schools both in Europe and worldwide. Below is our track record in these rankings, for 2015-2016:

- FT 2016 – RSM's MBA 16th in Europe and 42nd globally.
- FT 2015 meta-ranking (which incorporates all four FT rankings) RSM 13th in Europe.
- FT 2015 – Master in Management ranking, RSM is 5th globally.
- QS 2016: Erasmus University on Business and Management studies: 17th globally.
- US News & World 2016 – Economics and Business Global ranking: 16th globally.

5 good reasons

1 A unique campus

Erasmus University Rotterdam offers everything you need right on campus. Here you'll attend lectures and study in the library with fellow students. At lunch, you can eat in the food court or Erasmus Paviljoen and if you want to play sports, you go to the sports centre. International students can also live on campus. The campus really is the place to be!

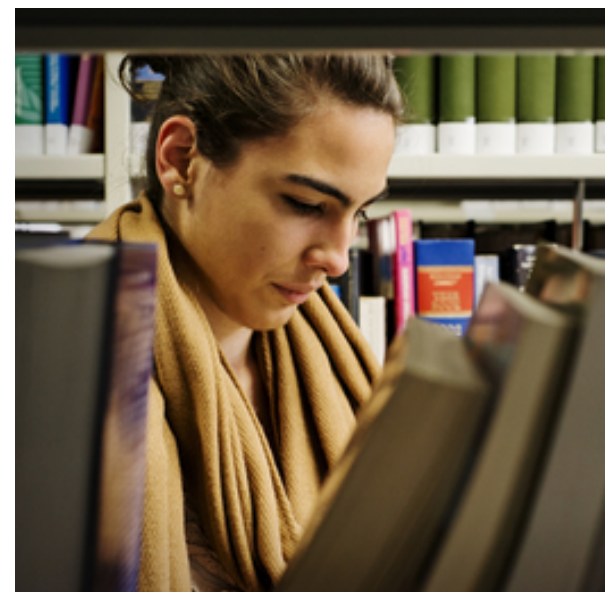


2 High-quality and top-ranked

Erasmus University Rotterdam offers high-quality education and research programmes. World-class quality, actually. International rankings show that Erasmus University is among the world's high-end players. Students appreciate the quality of the lectures, the expertise of the staff and the preparations for a successful career.

3 Good career opportunities

Organisations and companies all over the world are interested in Rotterdam alumni. During your studies, you pay a lot of attention to preparations for the labour market, for example during the Erasmus Recruitment Days: the biggest student recruitment event in Europe.



5 For ambitious thinkers and doers

If you are ambitious and prepared to work hard, Erasmus University is the place for you. We help you achieve the best results, get the most out of your education and encourage you to participate in extracurricular activities. During your studies, you can choose to be a member of a committee or board of a study association which boosts your CV.

4 A truly international university

The Rotterdam-born philosopher Desiderius Erasmus once said: "The world is my home." That's exactly what Erasmus University always bears in mind. In the multicultural classroom, you could attend lectures given by an Italian professor and your fellow students might come from countries such as China and Brazil. Lecturers travel across the world to bring you global perspectives. You will be part of a truly international environment.

Arrange your studies

How to prepare?

Once you have decided on a study programme, you need to prepare. The process starts with your admission application. Then you might need a visa or residence permit, and find a place to stay in Rotterdam.

Tuition fees

The 2017-2018 tuition fee for the IBA programme is €8,900 per year. The Dutch government contributes towards this cost for students who hold nationality from a country belonging to the European Economic Area (EEA). These students therefore pay only the statutory fee of €2,006* per year.

*The statutory fee is subject to change. Prior to the start of the academic year, tuition fees may be modified by the Dutch government. Erasmus University Rotterdam reserves the right to make changes affecting policies, fees, curricula or any other matter announced in this publication without further notice.

Accommodation

You will need a place to live. If you're in the Netherlands already, you can pay some visits to Rotterdam and will easily manage to find somewhere suitable to live. If you apply from abroad, you should know that SSH Student Housing offers furnished accommodation on and off campus to first-year international students. There are also other organisations that offer suitable accommodation depending on your needs and budget. For more information about your housing options in Rotterdam, please visit www.housing.eur.nl.

Costs of living

The costs of living and studying in the Netherlands are around € 1,000 a month. You need this to cover daily expenses such as rent, groceries, books and going out. A part-time job can be a source of additional income but do be advised that studying will take a lot of your time. International students



need to remember that they cannot rely on an additional income once they are in the Netherlands. Non-EEA students in particular should be aware that the number of hours they are allowed to work in a paid job are limited. Make sure that you have sufficient financial means before coming to Rotterdam.

Scholarships

As a rule, Dutch students will receive a government-funded study grant that comes as a loan. The Dutch study grant is also available under the same conditions to students from EEA countries, but only if the student, or their partner or parents have a paid job in the Netherlands for at least 14 hours per week. Moreover, EEA students can apply for so-called 'collegegeldkrediet', which is an advance on tuition.

A good preparation will help you in arranging your studies.



Other scholarship options

There are also other options for obtaining scholarships. You can find more information at www.grantfinder.nl, an online search engine which presents a range of Dutch scholarships for international students who wish to study in the Netherlands.

Non-EEA students pay the higher, non-subsidised tuition fee. For them, RSM offers merit-based scholarships. Find more information at www.rsm.nl/bachelor/international-business-administration/tuition-scholarships.

Visas

Whether or not you need a visa to enter the Netherlands depends on your nationality.

- If you are from the EEA, then you can easily take up residence in the Netherlands and do not need a residence permit.
- If you are from the USA, Canada, Japan, New Zealand, Monaco, South Korea or Australia, you do not need an entering permit for the Netherlands, only a residence permit for the duration of your study (three years plus three months).



- If you are from any other country, you need an entry permit for entering the Netherlands and a residence permit for the duration of your study (three years plus three months).

As soon as you are admitted to a programme (conditional or unconditional), RSM and EUR will send you all the visa information and apply for your visa. Please do not start the visa procedure on your own.

Medical and liability insurance

Dutch law requires everyone living in the Netherlands to be covered by health insurance. There are a number of insurance companies offering student insurance packages with good coverage at an affordable price. EUR recommends that you take out a policy before coming to the Netherlands. For more information, please visit www.eur.nl/english/insurance.

Study in the Netherlands

Introduction to the Netherlands

You probably know the Netherlands for its tulips, and so much more. The Netherlands has 17 million inhabitants, and is one of the smallest countries in Europe. Yet, it has one of the most important and most innovative economies. Its capital is Amsterdam. Rotterdam is the country's second largest city. Many internationals say the Netherlands is a well-organised country with open people. Nice to know: the Netherlands was the first country in Europe to offer study programmes taught in English. English is an important language in other ways too. In the Netherlands, you don't have to speak Dutch to order drinks, the bartender will switch to English for you.

Why study in the Netherlands?

In addition to guaranteeing a high-quality study programme and an internationally recognised degree, the Netherlands offers you a good time. You will feel safe and everything is close by. After a few weeks, you will be cycling around the city by bike, eating sandwiches for lunch, and saying 'gezellig' (try to pronounce that typical Dutch word) when meeting your friends. Welcome to the Netherlands!

Advantages of studying in the Netherlands

Students acknowledge Dutch education for its high quality and standards, and top-ranking positions. But most importantly: professors and teachers take you, your ideas and your contribution seriously. They are very approachable, and encourage you to develop critical and independent thinking. This will prove its worth during the rest of your career and life.



The Netherlands has over 18 million bikes.

Study in Rotterdam

S tudent city

Rotterdam is a very cosmopolitan city, and in addition to the city's vibrant hospitality scene, there are plenty of student activities.

You can join the Erasmus Student Network (ESN), which organises lots of social programmes, trips, interesting debates and cultural events, on and off campus. With a party now and then, of course.

Multicultural city

The inhabitants of Rotterdam have diverse backgrounds. This melting pot of nationalities and cultures makes Rotterdam an interesting city where you will soon feel at home. You can feel the international atmosphere on the streets while shopping at a Turkish bakery or an Indonesian toko. In Rotterdam, no one is a stranger.

City career perspectives

Rotterdam hosts many multinational organisations. You might get to know your future employer during your studies, for example by doing an internship. A good proficiency of English is required, but we recommend learning some Dutch as well to increase your chances in the competitive market for talent.



Did you know this about Rotterdam?

Rotterdam's slogan is 'Make it happen'. This is why Erasmus University is proud to be part of this city where people develop new and creative ideas every day. Even The New York Times and Rough Guides confirm its appeal and energy. In 2014, Rotterdam was ranked one of the world's '10 best places to go to' by Rough Guides.



Rotterdam is one of the world's
'10 best places to go to'.

Places to go to in the city

During your stay in Rotterdam, you should definitely climb the Euromast Tower, take a ride in a water taxi, have lunch with a view at Hotel New York, visit the many museums and enjoy a good night out in the Witte de Withstraat. There is never a dull moment, because the city has so much to offer.

Partner universities worldwide

E

urope

United Kingdom Aston University (Aston Business School), Birmingham; City University (Cass Business School), London; Lancaster University; University of Manchester (Manchester Business School); University of Strathclyde (Strathclyde Business School), Glasgow; University of Bath (School of Management), University of Warwick
Ireland University College Dublin, (Quinn School of Business); Trinity College Dublin **France** ESC Rennes; ESSEC Business School, Cergy; ESSCA, Angers; ESSCA, Paris; EM-Lyon; Grenoble, Ecole de Management; Sciences-Po, Paris; Université Paris Dauphine **Iceland** Reykjavik University **Norway** The Norwegian School of Management (BI), Oslo; The Norwegian School of Economics and BA, (NHH), Bergen **Finland** Aalto University School of Business **Denmark** Aarhus University School of Business and Social Sciences; Copenhagen Business School (CBS) **Czech Republic** University of Economics, Prague **Russia** St. Petersburg State University **Germany** University of Mannheim; WHU Otto Beisheim School of Management, Koblenz Vallendar **Sweden** Stockholm School of Economics SSE **Switzerland** University of St. Gallen (HSG) **Italy** Università Commerciale Luigi Bocconi, Milan **Portugal** Universidade Catolica Portuguesa; Universidade Nova de Lisboa, **Spain** ESADE, Barcelona; Universitat Pompeu Fabra (Faculty of Economic and Business Sciences), Barcelona; IE Madrid; Universidad Carlos III, Madrid; ICADE, Madrid; Universidad de Navarra, Pamplona **Turkey** Koc University, Istanbul

The Americas

Canada HEC Montréal; Queens University (Queen's School of Business), Kingston; University of British Columbia (Sauder School of Business), Vancouver; York University (Schulich School of Business), Toronto **United States** Emory University (Goizueta Business School), Atlanta; Ohio State University (Fisher College of Business), Columbus; Texas Tech University; University of Michigan (Ross), Ann Arbor; University of



North Carolina (Kenan-Flagler Business School), Chapel Hill; University of Pennsylvania (The Wharton School), Philadelphia; University of South Carolina (Darla Moore School of Business), Columbia; University of Southern California (Marshall School of Business), Los Angeles; University of Texas at Austin (McCombs School of Business); University of Virginia (McIntire), Charlottesville; University of Washington (Foster School of Business), Seattle **Mexico** Instituto Tecnológico Autónomo de México (ITAM) Mexico City; Instituto Tecnológico de Estudios Superiores (ITESM; EGADE) Monterrey **Argentina** Universidad Torcuato di Tella, Buenos Aires **Brazil** Fundação Getulio Vargas, São Paulo **Chile** Universidade Adolfo Ibanez, Vina del Mar; Pontificia Universidad Católica de Chile, Santiago **Peru** Escuela de Administración de Negocios (ESAN)

Exchange programme opportunities with 90+ partner schools around the world.

A

sia

Korea, Republic of Ewha Womans University; Yonsei University; Korea University Business School; Seoul National University **Japan** Keio University; Nagoya University of Commerce & Business **China** Beijing University (Guanghua School of Management); Tsinghua University (School of Economics and Management), Beijing; Shanghai University of Finance and Economics (SUFEC); Shanghai Jiao Tong University (Antai College of Economics and Management), Sun Yat-Sen University (Lingnan University College), Guangzhou **Hong Kong** City University Hong Kong; The Chinese University of Hong Kong (CUHK); The Chinese University of Hong Kong, Shenzeng; The Hong Kong University of Science and Technology (HKUST); University of Hong Kong; Hong Kong Polytechnic University **Taiwan** National Chengchi University (College of Commerce), Taipei; National Taiwan University (College of Management), Taipei **Indonesia** Universitas Gadjah Mada **Singapore** Nanyang University Singapore, (Nanyang Business School); National University of Singapore (NUS); Singapore Management University (SMU) **Thailand** Chulalongkorn University, Bangkok; Thammasat University, Bangkok **Kuwait** Kuwait University



Oceania

Australia University of Melbourne, (Melbourne Business School); University of New South Wales, Sydney; University of Sydney; University of Technology Sydney (UTS Business School); Queensland University of Technology **New Zealand** University of Otago, Dunedin; University of Waikato

Africa

Morocco ESCA (Ecole de Management), Casablanca

Meet us on campus or online

For an overview of our open days and various other ways to find out more about International Business Administration, go to www.rsm.nl/bsciba/meet-us.

What's next?

Make a good study choice

Choosing your studies is very important. It influences the rest of your life. So think about what you would like to do and what your talents and competences are. Erasmus University Rotterdam (EUR) invites you to the campus to get to know the university and study programme better. Your study time can only be a success if you choose the right programme. Do not hesitate to ask for help.

Open days

EUR will host open days each autumn and spring for you to check out the university. You can tour the EUR campus, and learn more about specific study programmes and the university in general.

Student for a day

You and other prospective students can also join EUR's "Student for a Day" programme, experiencing lectures and workshops, and getting a real taste of student life at Erasmus University Rotterdam.

On location and online

RSM visits schools upon request, organises information sessions on location and actively takes part in education fairs. Every month, RSM organises a virtual information session during which you can watch and listen to a live online presentation about the IBA programme. You can also ask questions during this live session.

Find ways to contact us and current students via www.rsm.nl/bsciba/meet-us and talktoastudent.rsm.nl.

If you want to keep up with RSM while on the move, please download our free mobile app for Android or iPhone.

Contact us

You can contact the IBA office for general information about the programme, IBA selection procedure, mathematics test, enrolment, housing and visa:

Monday – Friday: 10:00-12:00 and 14:00-16:00 CET
Tel.: +31 10 408 9591

www.rsm.nl/contactiba

Discover more

For an overview of all the programmes, study events and general information, please visit

www.eur.nl/english/bachelor.

For more information about the IBA programme, please visit www.rsm.nl/iba.